

JOHNSTOWN, PENNSYLVANIA

AL-898 (FAA)

22363

WAAS CH <b>61029</b> <b>W05A</b>	APP CRS <b>049°</b>	Rwy Idg TDZE Apt Elev	<b>4387</b> <b>2283</b> <b>2284</b>
--	------------------------	-----------------------------	---

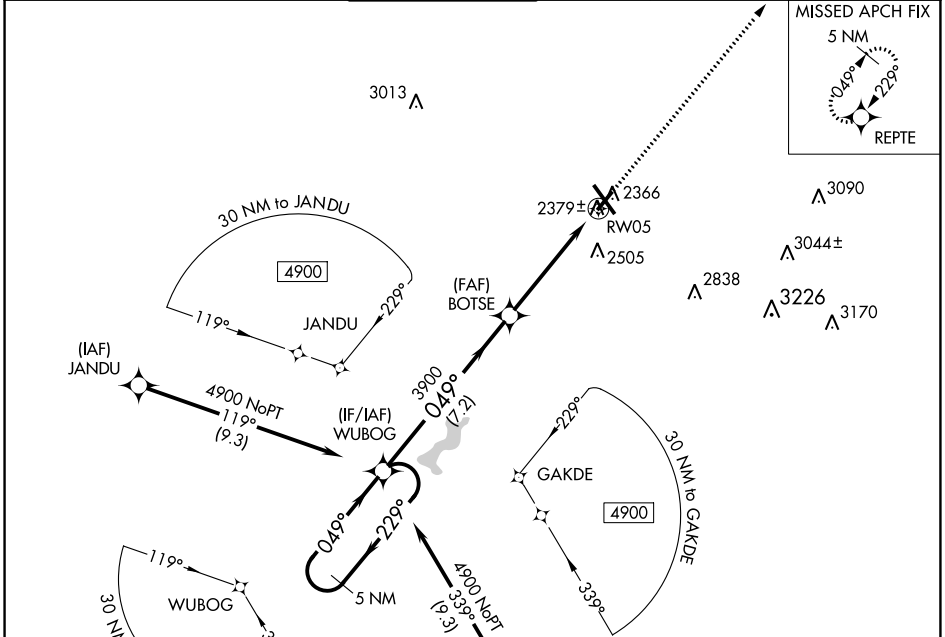
# RNAV (GPS) RWY 5

JOHN MURTHA JOHNSTOWN/CAMBRIA COUNTY (JST)

⚠ When local altimeter setting not received, procedure NA. For uncompensated Baro-VNAV systems, LNAV/VNAV NA below -19°C (-2°F) or above 29°C (84°F). DME/DME RNP-0.3 NA. Rwy 5 helicopter visibility reduction below 3/4 SM NA.

MISSED APPROACH: Climb to 4900 direct REPTE and hold.

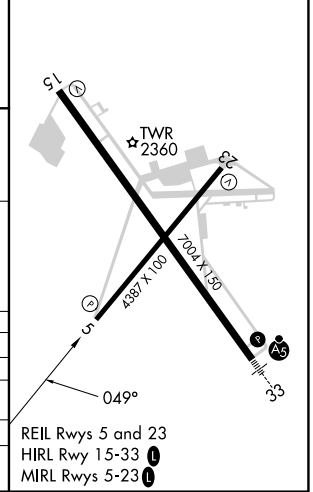
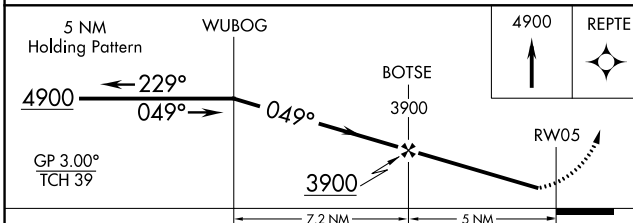
ATIS <b>118.325</b>	JOHNSTOWN APP CON ★ <b>121.2 299.2</b>	JOHNSTOWN TOWER ★ <b>125.75 (CTAF) 0</b>	GND CON <b>121.6</b>	CLNC DEL <b>126.85 235.775</b>	UNICOM <b>122.95</b>
------------------------	---	---	-------------------------	-----------------------------------	-------------------------



NE-4, 22 FEB 2024 to 21 MAR 2024

NE-4, 22 FEB 2024 to 21 MAR 2024

ELEV 2284	<b>D</b>	TDZE 2283
-----------	----------	-----------



CATEGORY	A	B	C	D
LPV DA		2533-1	250 (300-1)	
LNAV/VNAV DA		2573-1	290 (300-1)	
LNAV MDA		2640-1	357 (400-1)	
<b>C</b> CIRCLING	2700-1 416 (500-1)	2880-1 596 (600-1)	2880-1½ 596 (600-1½)	3000-2¼ 716 (800-2¼)

JOHNSTOWN, PENNSYLVANIA  
Amdt 2B 23APR20

JOHN MURTHA JOHNSTOWN/CAMBRIA COUNTY (JST)  
40°19'N-78°50'W

# RNAV (GPS) RWY 5