

WAAS CH <b>66014</b> <b>W31A</b>	APP CRS <b>311°</b>	Rwy ldg <b>6502</b> TDZE <b>1498</b> Apt Elev <b>1500</b>
--	------------------------	---

# RNAV (GPS) RWY 31

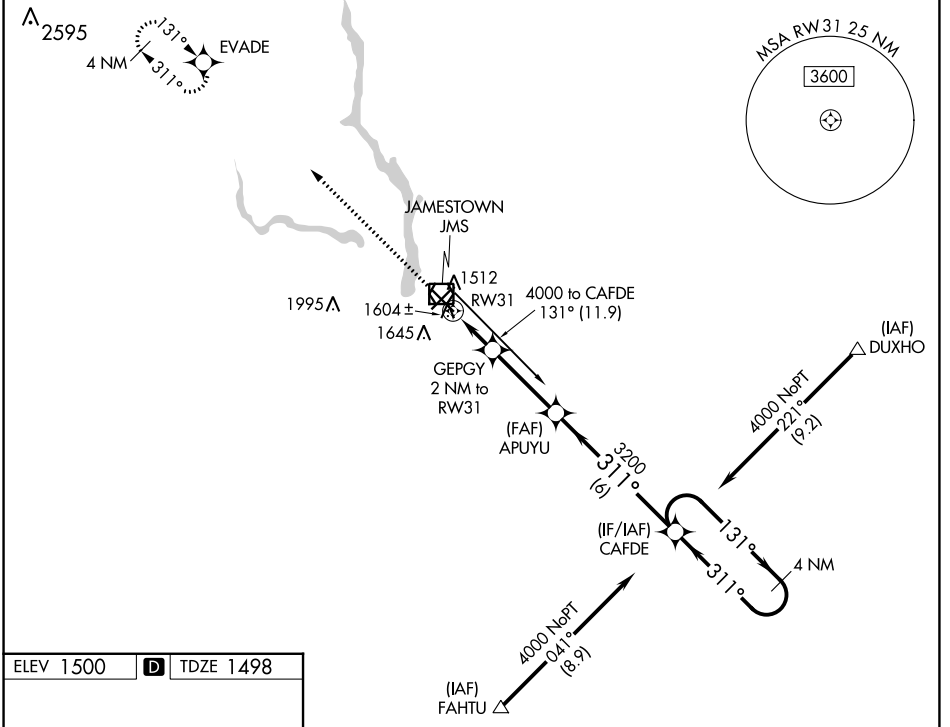
JAMESTOWN RGNL (JMS)

**⚠** For uncompensated Baro-VNAV systems, LNAV/VNAV NA below -21°C (-5°F) or above 54°C (130°F). DME/DME RNP-0.3 NA.

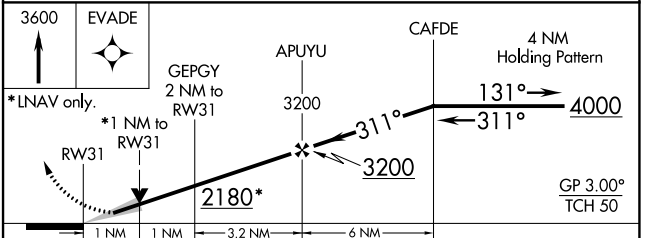
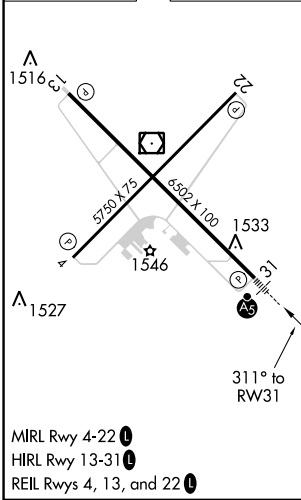
**MALSR**

**MISSED APPROACH:** Climb to 3600 direct EVADE and hold.

ASOS <b>118.425</b>	MINNEAPOLIS CENTER <b>124.2 270.3</b>	UNICOM <b>123.0 (CTAF) 0</b>
------------------------	--	---------------------------------



ELEV 1500	<b>D</b>	TDZE 1498
-----------	----------	-----------



CATEGORY	A	B	C	D
LPV DA	1698-½		200 (200-½)	
LNAV/VNAV DA	1786-½		288 (300-½)	
LNAV MDA	1880-½ 382 (400-½)		1880-⅝ 382 (400-⅝)	
<b>C</b> CIRCLING	1960-1 460 (500-1)		2000-1½ 2300-2½ 500 (500-1½) 800 (800-2½)	

NC-1, 22 FEB 2024 to 21 MAR 2024

NC-1, 22 FEB 2024 to 21 MAR 2024