

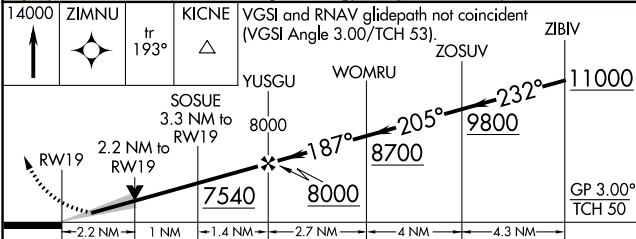
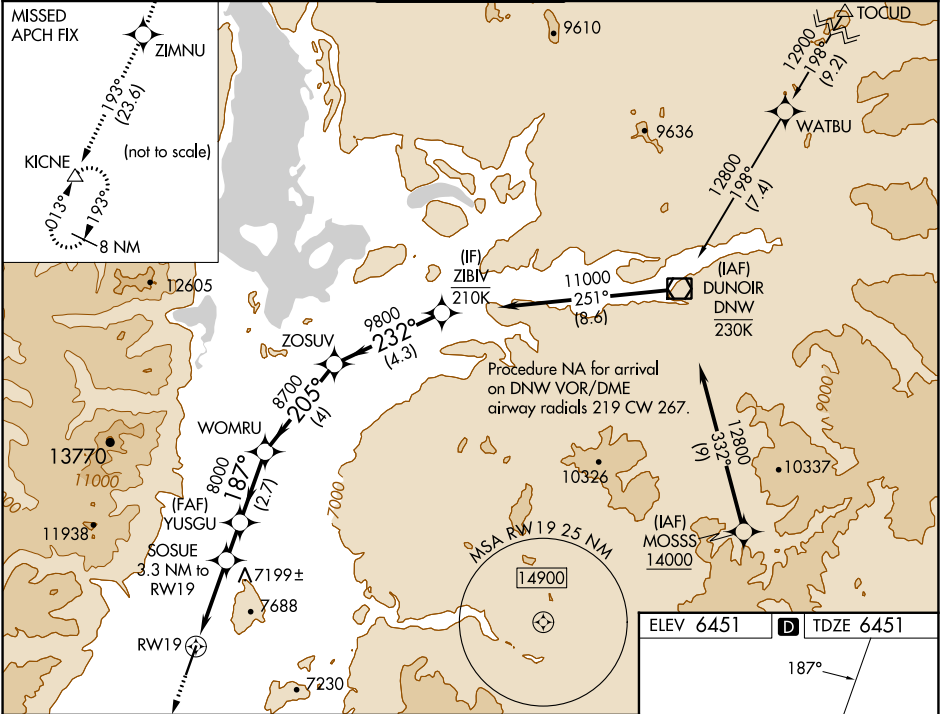
WAAS CH 90232 W19A	APP CRS 187°	Rwy Idg TDZE Apt Elev	6300 6451 6451
---------------------------------	------------------------	-----------------------------	---

RNAV (GPS) Z RWY 19

JACKSON HOLE (JAC)

RNP APCH - GPS.	MALS =	MISSED APPROACH: Climb to 14000 direct ZIMNU and on track 193° to KICNE and hold, continue climb-in-hold to 14000. *Missed approach requires minimum climb of 230 feet per NM to 9000.
<p>▼ Circling NA for Cats A, B, and C east of Rwy 1-19.</p> <p>▲ For inop ALS, increase LNAV Cats C and D visibility to 2 ½ SM. Inop table does not apply to LPV *all Cats.</p>		

D-ATIS 120.625	SALT LAKE CENTER 133.25 285.6	JACKSON TOWER* 118.075 (CTAF)	GND CON 124.55	UNICOM 122.95
--------------------------	---	---	--------------------------	-------------------------



CATEGORY	A	B	C	D
LPV DA*		6651/40	200 (200-¾)	
LPV DA		6927/60	476 (500-1¼)	
LNAV MDA	7220/40 769 (800-¾)	7220/55 769 (800-1)	7220-2 769 (800-2)	
CIRCLING	7220-1 769 (800-1)	7220-1¼ 769 (800-1¼)	7440-3 989 (1000-3)	NA

ELEV 6451	TDZE 6451
-----------	-----------

TWR 6506

CL Rwy 1-19

HIRL Rwy 1-19

NW-1, 22 FEB 2024 to 21 MAR 2024

NW-1, 22 FEB 2024 to 21 MAR 2024