

APP CRS <b>191°</b>	Rwy Idg <b>5000</b>
	TDZE <b>54</b>
	Apt Elev <b>65</b>

# RNAV (GPS) RWY 19

INVERNESS (INF')

RNP APCH.

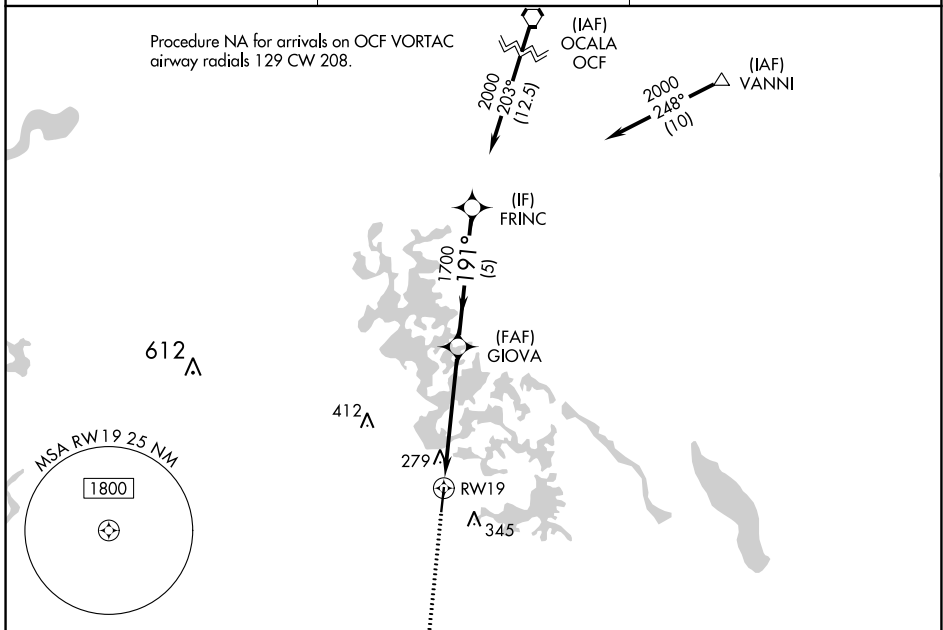
**⚠** **⚠** Rwy 19 helicopter visibility reduction below 1 SM NA.

MISSED APPROACH: Climb to 2000 direct BOWSK and on track 176° to REBEC and hold.

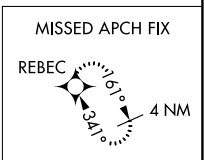
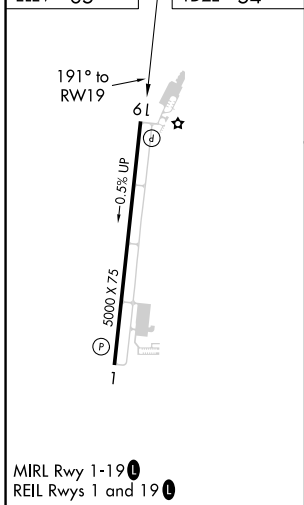
AWOS-3  
**119.975**

JACKSONVILLE APP CON  
**118.6 251.15**

UNICOM  
**122.725 (CTAF)** **📻**



ELEV 65	TDZE 54
---------	---------



Visual Segment - Obstacles.	FRINC			
2000	BOWSK	REBEC		
↑	⬠	tr 176°	⬠	
RW19		GIOVA	2000	
		1700	191°	
		5.1 NM		
		5 NM		
CATEGORY	A	B	C	D
LNAV MDA	580-1	526 (600-1)	580-1½ 526 (600-1½)	NA
CIRCLING	660-1	595 (600-1)	660-1½ 595 (600-1½)	NA