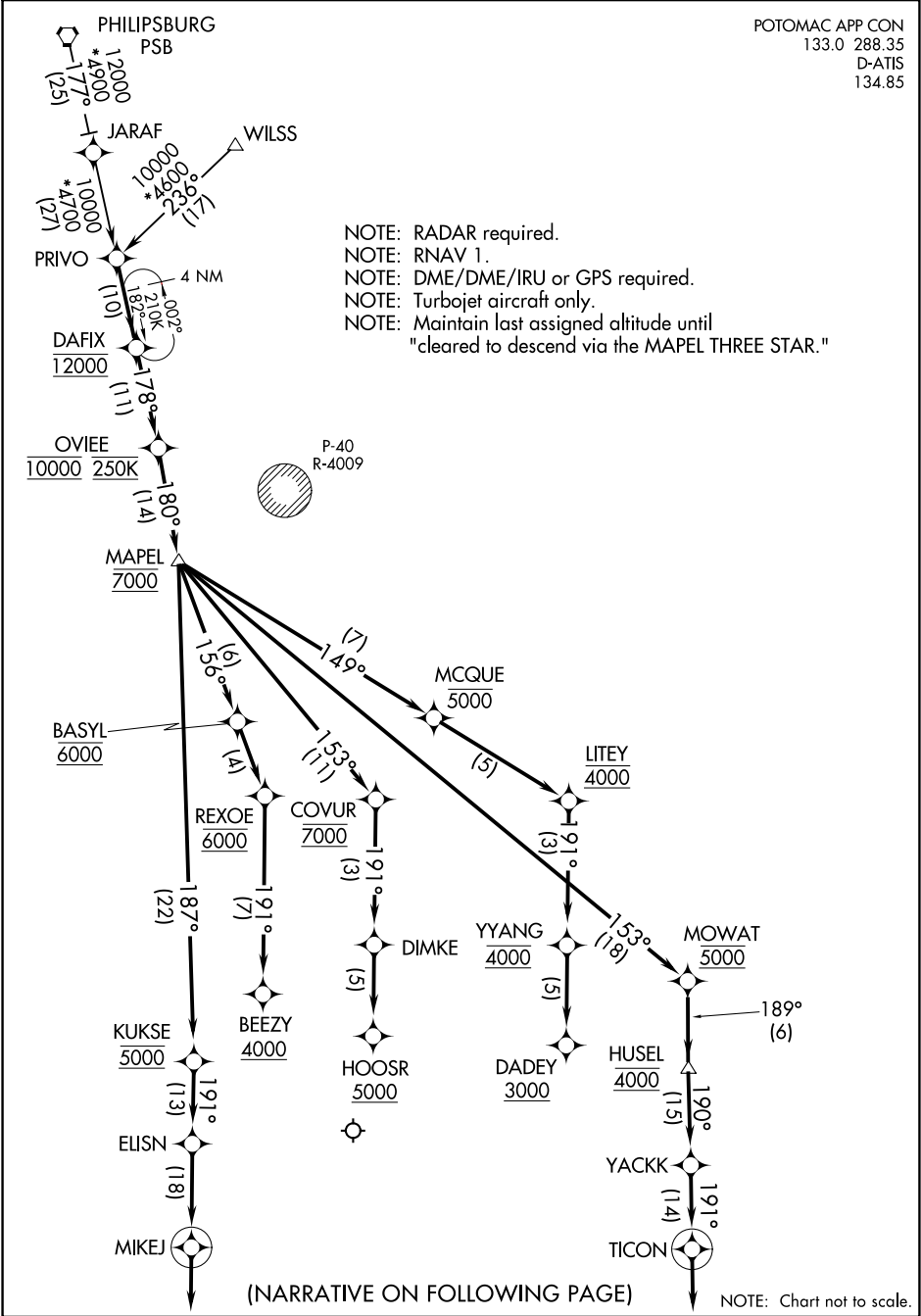


POTOMAC APP CON
133.0 288.35
D-ATIS
134.85



NE-3, 22 FEB 2024 to 21 MAR 2024

NE-3, 22 FEB 2024 to 21 MAR 2024

ARRIVAL ROUTE DESCRIPTION

PHILIPSBURG TRANSITION (PSB.MAPEL3):
WILSS TRANSITION (WILSS.MAPEL3):

From PRIVO on track 177° to cross DAFIX at 12000, then on track 178° to cross OVIEE at 10000 and at 250K, then on track 180° to cross MAPEL at 7000.

LANDING RWYS 1C/R: From MAPEL on track 153° to cross MOWAT at 5000, then on track 189° to cross HUSEL at 4000, then on track 190° to YACKK, then on track 191° to TICON, then on track 191°. Expect RADAR vectors to final approach course.

LANDING RWY 1L: From MAPEL on track 187° to cross KUKSE at 5000, then on track 191° to ELISN, then on track 191° to MIKEJ, then on track 191°. Expect RADAR vectors to final approach course.

LANDING RWY 19C: From MAPEL on track 153° to cross COVUR at 7000, then on track 191° to DIMKE, then on track 191° to cross HOOSR at or above 5000. Expect ILS or LOC Rwy 19C approach.

LANDING RWY 19L: From MAPEL on track 149° to cross MCQUE at or below 5000, then on track 149° to cross LITEY at 4000, then on track 191° to cross YYANG at 4000, then on track 191° to cross DADEY at or above 3000. Expect ILS or LOC Rwy 19L approach.

LANDING RWY 19R: From MAPEL on track 156° to cross BASYL at 6000, then on track 156° to cross REXOE at 6000, then on track 191° to cross BEEZY at or above 4000. Expect ILS or LOC Rwy 19R approach.