

SAGINAW, MICHIGAN

AL-6474 (FAA)

24025

VOR/DME MBS <b>112.9</b> Chan <b>76</b>	APP CRS <b>125°</b>	Rwy Idg TDZE Apt Elev	<b>N/A</b> <b>N/A</b> <b>602</b>
---	------------------------	-----------------------------	--

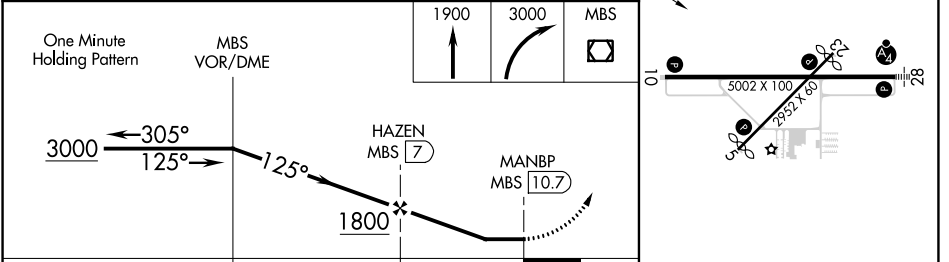
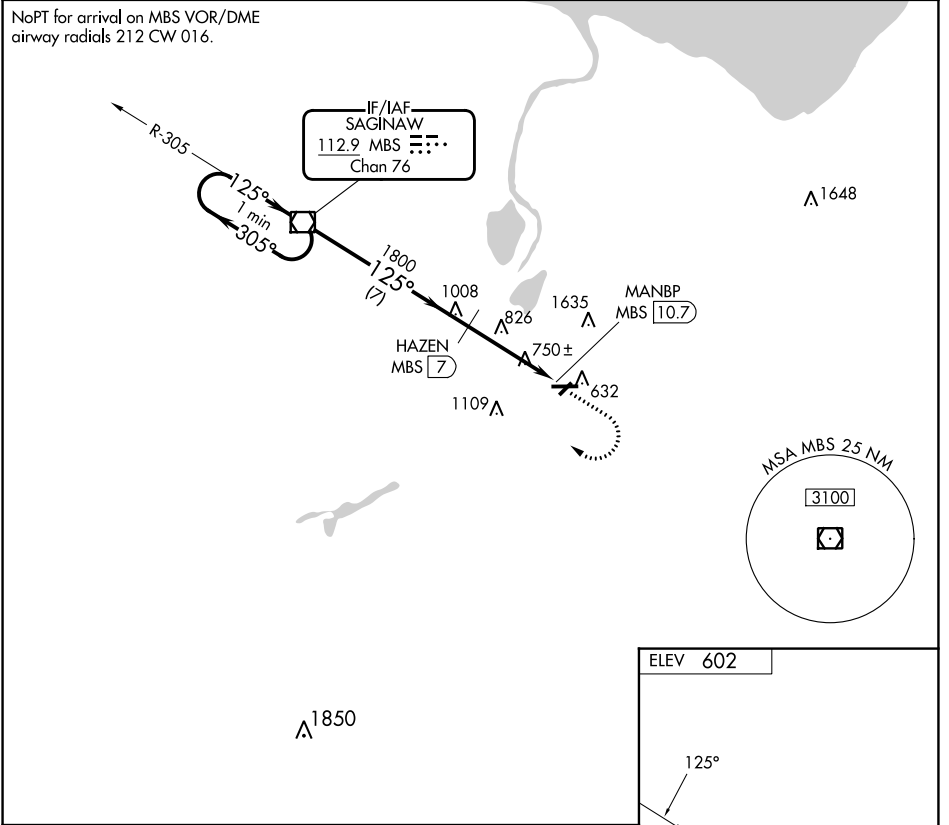
# VOR/DME-A

SAGINAW COUNTY/H W BROWNE (HYX)

**⚠** Circling to Rwy 5/23 NA at night. When local altimeter setting not received, use Saginaw MBS Intl altimeter setting and increase all MDA 40 feet and increase Circling Cat C visibility 1/4 SM. Circling NA for Cat C north of Rwy 10-28.

**⚠** MISSED APPROACH: Climb to 1900 then climbing right turn to 3000 direct MBS VOR/DME and hold.

AWOS-3PT <b>118,325</b>	GREAT LAKES APP CON ★ <b>120,95 235,625</b>	UNICOM <b>122.8 (CTAF)</b>
----------------------------	--	-------------------------------



CATEGORY	A	B	C	D
<b>C</b> CIRCLING	1160-1	558 (600-1)	1460-2½ 858 (900-2½)	NA

REIL Rwy 10 **⓪**  
HIRL Rwy 10-28 **⓪**  
MIRL Rwy 5-23 **⓪**

SAGINAW, MICHIGAN

SAGINAW COUNTY/H W BROWNE (HYX)

Amtd 4A 18JUN20

43°26'N - 83°52'W

# VOR/DME-A

EC-1, 22 FEB 2024 to 21 MAR 2024

EC-1, 22 FEB 2024 to 21 MAR 2024