

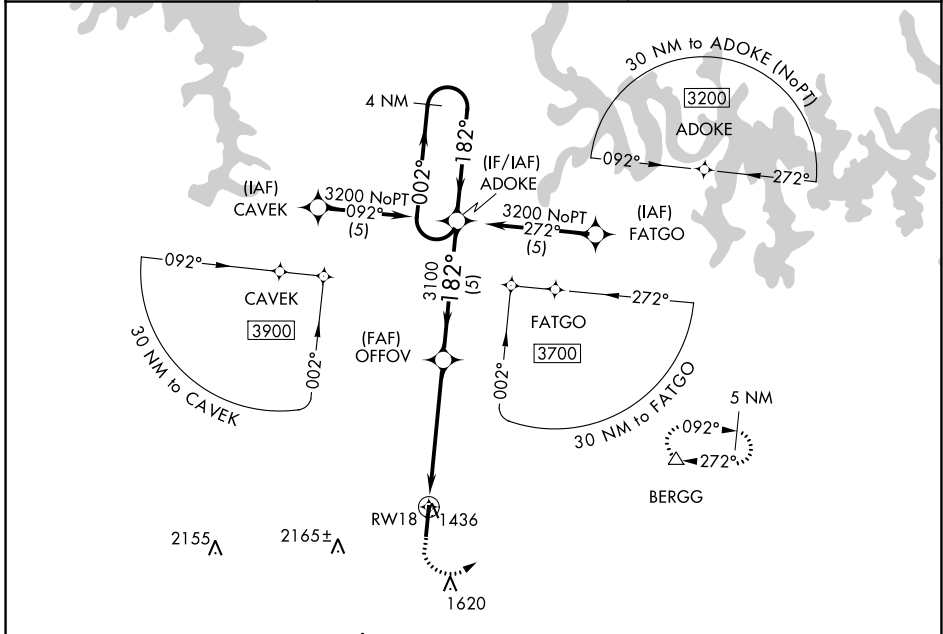
APP CRS	Rwy ldg	<b>6161</b>
<b>182°</b>	TDZE	<b>1365</b>
	Apt Elev	<b>1365</b>

# RNAV (GPS) RWY 18

BOONE COUNTY (HRO)

RNP APCH.	MISSED APPROACH: Climb to 1800 then climbing left turn to 3200 direct BERGG and hold.
	Rwy 18 helicopter visibility reduction below 3/4 SM NA.

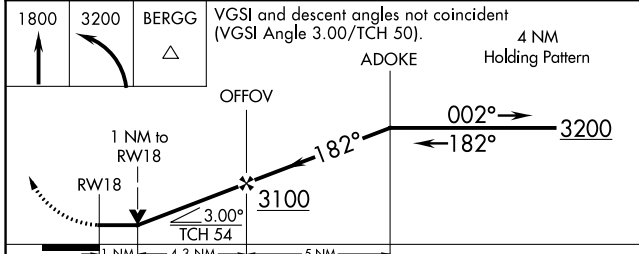
ASOS <b>121.125</b>	MEMPHIS CENTER <b>126.85 281.55</b>	UNICOM <b>123.0 (CTAF) 0</b>
------------------------	--	---------------------------------



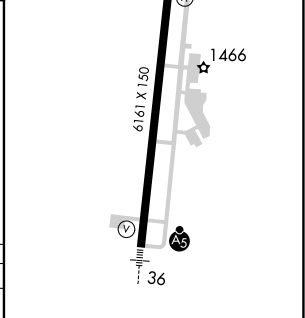
SC-1, 22 FEB 2024 to 21 MAR 2024

SC-1, 22 FEB 2024 to 21 MAR 2024

1800	3200	BERGG	VGSI and descent angles not coincident (VGSI Angle 3.00/TCH 50).	4 NM Holding Pattern



ELEV 1365	TDZE 1365
-----------	-----------



CATEGORY	A	B	C	D
LNAV MDA	1720-1 355 (400-1)			
CIRCLING	1840-1 475 (500-1)	1860-1 495 (500-1)	2340-3 975 (1000-3)	2560-3 1195 (1200-3)

HIRL Rwy 18-36

REIL Rwy 18