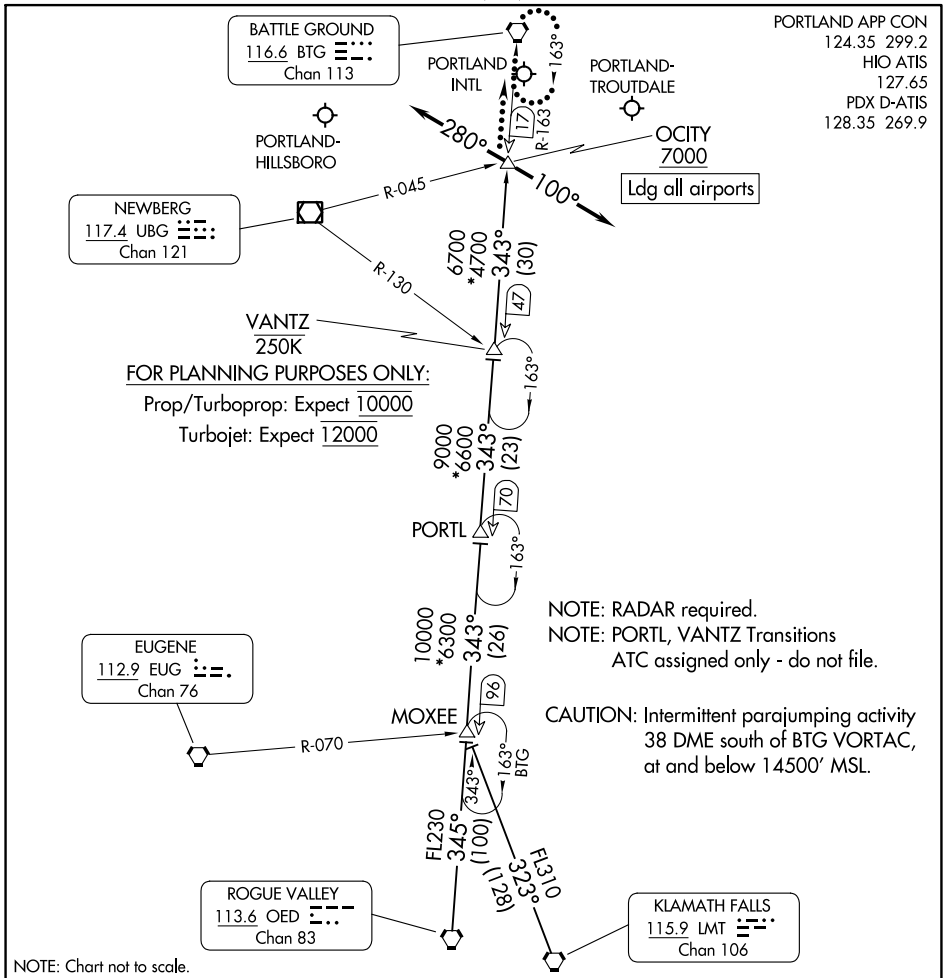


OCITY THREE ARRIVAL



NOTE: RADAR required.
 NOTE: PORTL, VANTZ Transitions
 ATC assigned only - do not file.

CAUTION: Intermittent parajumping
 38 DME south of BTG VORTAC,
 at and below 14500' MSL.

ARRIVAL ROUTE DESCRIPTION

- KLAMATH FALLS TRANSITION (LMT.OCITY3):** From over LMT VORTAC on LMT R-323 to MOXEE, then on BTG R-163 to OCITY. Thence. . .
- MOXEE TRANSITION (MOXEE.OCITY3):** From over MOXEE on BTG R-163 to OCITY. Thence. . .
- ROGUE VALLEY TRANSITION (OED.OCITY3):** From over OED VORTAC on OED R-345 to MOXEE, then on BTG R-163 to OCITY. Thence. . .
- PORTL TRANSITION (PORTL.OCITY3):** From over PORTL on BTG R -163 to OCITY. Thence. . .
- VANTZ TRANSITION (VANTZ.OCITY3):** From over VANTZ on BTG R-163 to OCITY. Thence. . .
- LANDING EAST:** From OCITY heading 280°, expect RADAR vectors to final approach course.
- LANDING WEST:** From OCITY heading 100°, expect RADAR vectors to final approach course.
- LOST COMMUNICATIONS:** After OCITY, proceed direct BTG VORTAC and hold.

OCITY THREE ARRIVAL