

VORTAC LAX <b>113.6</b> Chan 83	APP CRS <b>261°</b>	Rwy Idg TDZE Apt Elev <b>63</b> <b>66</b>	<b>4193</b>
---------------------------------------	------------------------	---	-------------

# VOR RWY 25

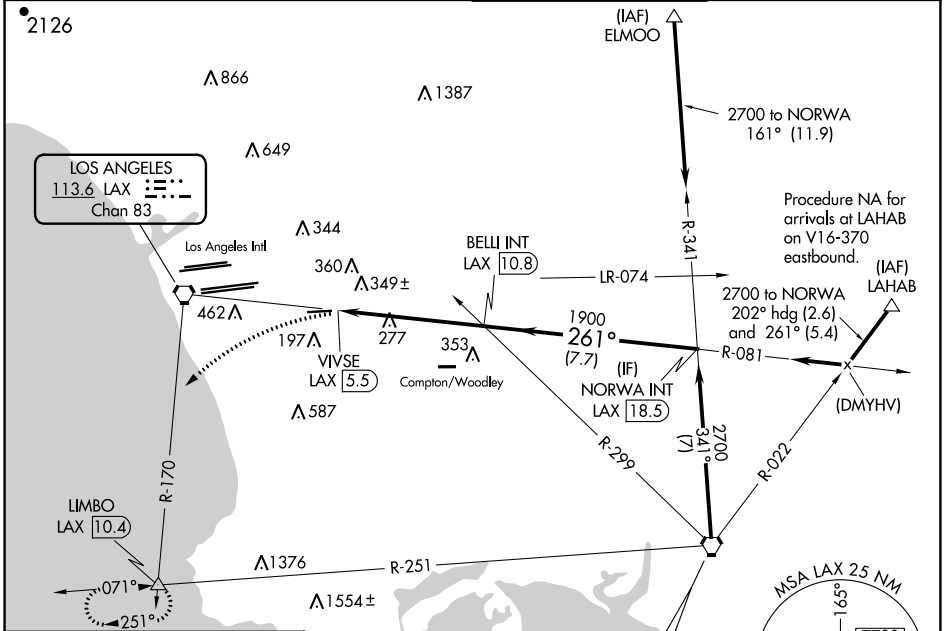
JACK NORTHROP FLD/HAWTHORNE MUNI (HHR)

⚠ Circling NA north of Rwy 7-25. Rwy 25 helicopter visibility reduction below 1 SM NA. When local altimeter setting not received, use Los Angeles Intl altimeter setting. Circling Rwy 7 NA at night. Inop table does not apply to S-25 Cats A and B. For inop ALS, increase S-25 Cats C/D visibility to 1/8.

ODALS

MISSED APPROACH: Climbing left turn to 3000 via heading 210° and LAX VORTAC R-170 to LIMBO INT/LAX 10.4 DME and hold.

ATIS <b>118.4</b>	SOCAL APP CON <b>124.9 269.0</b>	HAWTHORNE TOWER ★ <b>121.1 (CTAF) 0 257.8</b>	GND CON <b>125.1</b>
----------------------	-------------------------------------	--	-------------------------



ELEV 66	TDZE 63
---------	---------

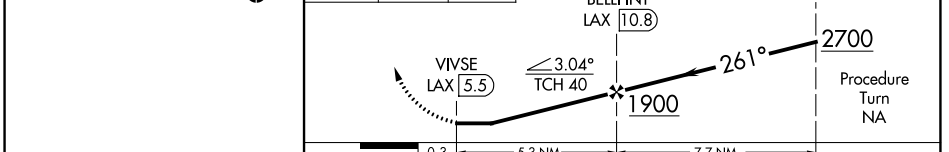


Procedure NA for arrivals at LAHAB on V16-370 eastbound.

Procedure NA for arrivals at SLI VORTAC on V459-597 southeast bound.

Procedure NA for arrivals at LIMBO on V459-597 southeast bound.

VGSJ and descent angles not coincident (VGSJ Angle 3.50/TCH 26).



	A	B	C	D
REIL Rwy 25 MIRL Rwy 7-25				
FAF to MAP 5.3 NM				
Knots	60	90	120	150
Min:Sec	5:18	3:32	2:39	2:07
Min:Sec	5:18	3:32	2:39	2:07
☑ CIRCLING	620-1	554 (600-1)	780-2 714 (800-2)	780-2 1/4 714 (800-2 1/4)
S-25	620-1 557 (600-1)		620-1 3/8 557 (600-1 3/8)	

# VOR RWY 25

SW-3, 22 FEB 2024 to 21 MAR 2024

SW-3, 22 FEB 2024 to 21 MAR 2024