

(WLDCT6.MCI) 23278

# WILDCAT SIX DEPARTURE

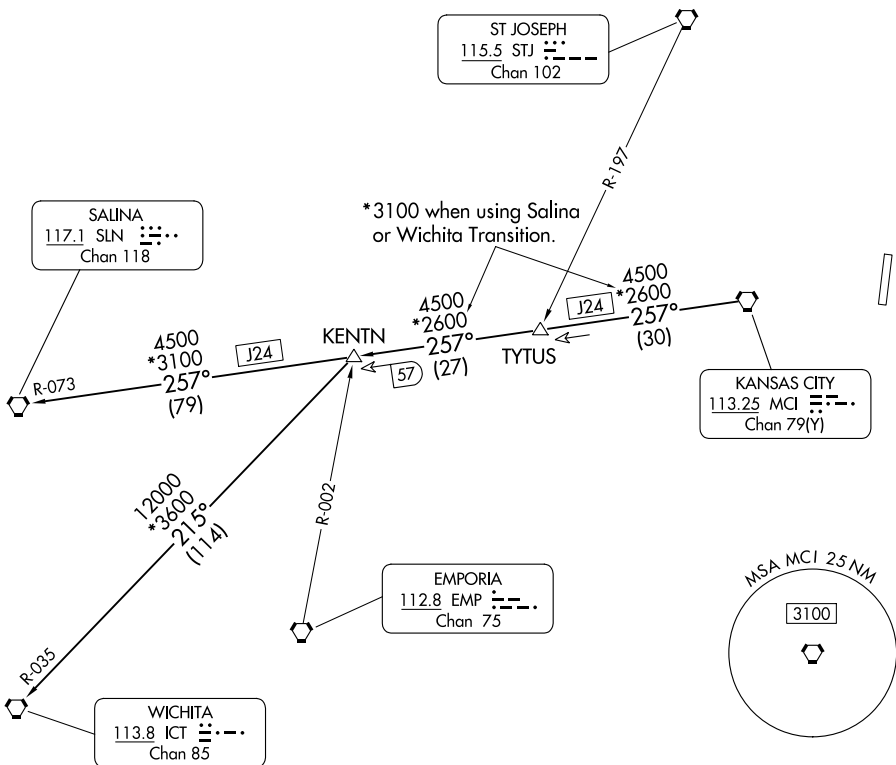
AL-9229 (FAA)

MIDWEST NTL AIR CENTER (GPH)  
MOSBY, MISSOURI

KANSAS CITY DEP CON  
118.4 307.35  
CLNC DEL  
118.2

RADAR required.

**TOP ALTITUDE:**  
**10000**



NC-3, 22 FEB 2024 to 21 MAR 2024

NC-3, 22 FEB 2024 to 21 MAR 2024

**TAKEOFF MINIMUMS**  
Rwys 18, 36: Standard.

NOTE: Chart not to scale.



## DEPARTURE ROUTE DESCRIPTION

**TAKEOFF ALL RUNWAYS:** Climb on assigned heading for RADAR vectors to appropriate route. Maintain 10000, expect filed altitude 10 minutes after departure.

**KENTN TRANSITION (WLDCT6.KENTN):** From over MCI VORTAC on MCI R-257 to KENTN.

**SALINA TRANSITION (WLDCT6.SLN):** From over MCI VORTAC on MCI R-257 and SLN R-073 to SLN VORTAC.

**WICHITA TRANSITION (WLDCT6.ICT):** From over MCI VORTAC on MCI R-257 to KENTN, then on ICT R-035 to ICT VORTAC.

# WILDCAT SIX DEPARTURE

(WLDCT6.MCI) 05OCT23

MOSBY, MISSOURI  
MIDWEST NTL AIR CENTER (GPH)