

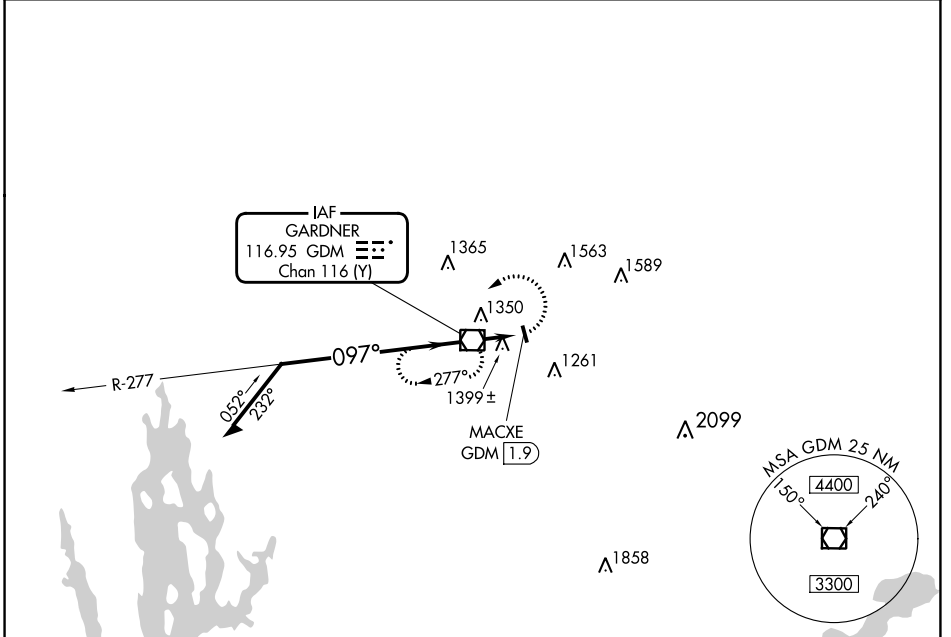
VOR/DME GDM <b>116.95</b> Chan <b>116</b> (Y)	APP CRS <b>097°</b>	Rwy Idg TDZE Apt Elev <b>N/A</b> <b>N/A</b> <b>955</b>
---	------------------------	---

**VOR-A**  
GARDNER MUNI (GDM)

**⚠ NA** Use Worcester altimeter setting, when not received use Orange Muni altimeter setting and increase all MDA 40 feet, increase Circling Cats A/B visibility ¼ SM. Procedure NA at night. Helicopter visibility reduction below 1 SM NA.

**MISSED APPROACH:** Climbing left turn to 3000 direct GDM VOR/DME and hold, continue climb-in-hold to 3000.

BOSTON CENTER <b>123.75 338.2</b>	UNICOM <b>122.8</b> (CTAF) <b>📻</b>
--------------------------------------	--



Remain within 10 NM	GDM VOR/DME	3000	GDM
3000	2400	MACXE GDM 1.9	
		1.9 NM	

CATEGORY	A	B	C	D	FAF to MAP 1.9 NM					
CIRCLING	1760-1 805 (900-1)	1760-1¼ 805 (900-1¼)	1980-3	1025 (1100-3)	Knots	60	90	120	150	180
					Min:Sec	1:54	1:16	0:57	0:46	0:38

NE-1, 22 FEB 2024 to 21 MAR 2024

NE-1, 22 FEB 2024 to 21 MAR 2024