

APP CRS	Rwy Idg	<b>4100</b>
<b>083°</b>	TDZE	<b>3669</b>
	Apt Elev	<b>3703</b>

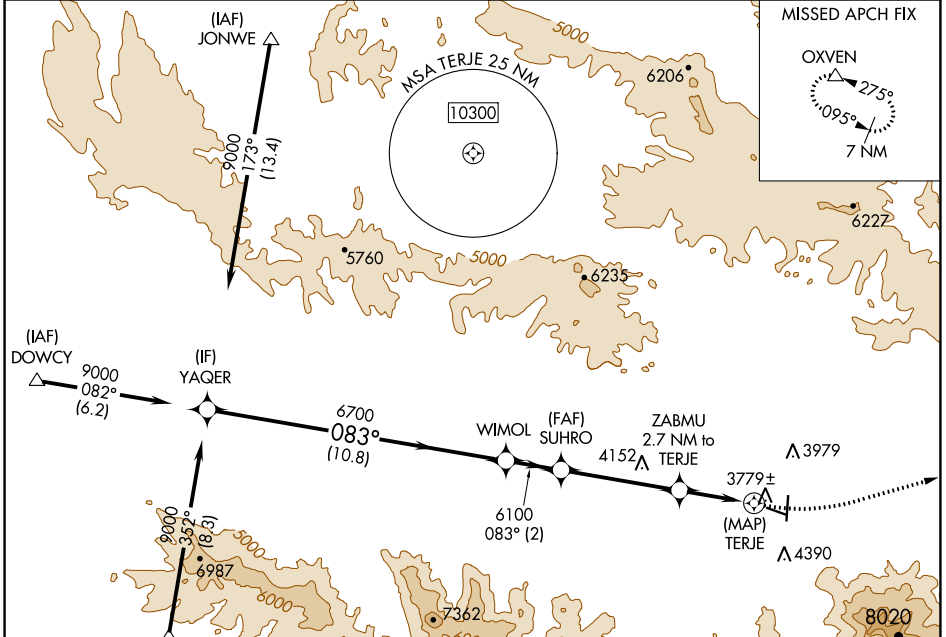
# RNAV (GPS) Y RWY 9

GRANT COUNTY RGNL/OGLIVIE FLD (GCD)

**⚠** When local altimeter setting not received, procedure NA.  
**⚠** Circling NA south of Rwy 9-27. DME/DME RNP-0.3 NA.  
 Helicopter visibility reduction below 3/4 SM not authorized.

MISSED APPROACH: Climbing left turn to 12000 direct OXVEN and hold, continue climb-in-hold to 12000.

AWOS-3 <b>118.375</b>	SEATTLE CENTER <b>128.15 257.75</b>	UNICOM <b>122.8 (CTAF) 0</b>
--------------------------	--	---------------------------------



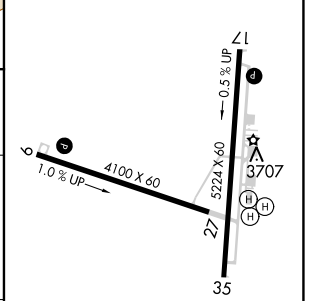
NW-1, 22 FEB 2024 to 21 MAR 2024

NW-1, 22 FEB 2024 to 21 MAR 2024

ELEV 3703	TDZE 3669
-----------	-----------



TERJE	OXVEN
-------	-------



YAQER	WIMOL	SUHRO	ZABMU	TERJE	OXVEN
9000	6700	6100	4700		12000
083°	083°	3.03°			
10.8 NM	2 NM	4.3 NM	2.7 NM	0.5	

CATEGORY	A	B	C	D
LNVA MDA	4280-1 611 (600-1)	4280-1 3/4 611 (600-1 3/4)	4280-1 3/4 611 (600-1 3/4)	NA
CIRCLING	4280-1 577 (600-1)	4520-1 1/4 817 (900-1 1/4)	5160-3 1457 (1500-3)	NA

REIL Rwy 17 and 9 0  
 MIRL Rwy 9-27 and 17-35 0