

APP CRS <b>098°</b>	Rwy Idg TDZE <b>1424</b> Apt Elev <b>1430</b>
------------------------	---

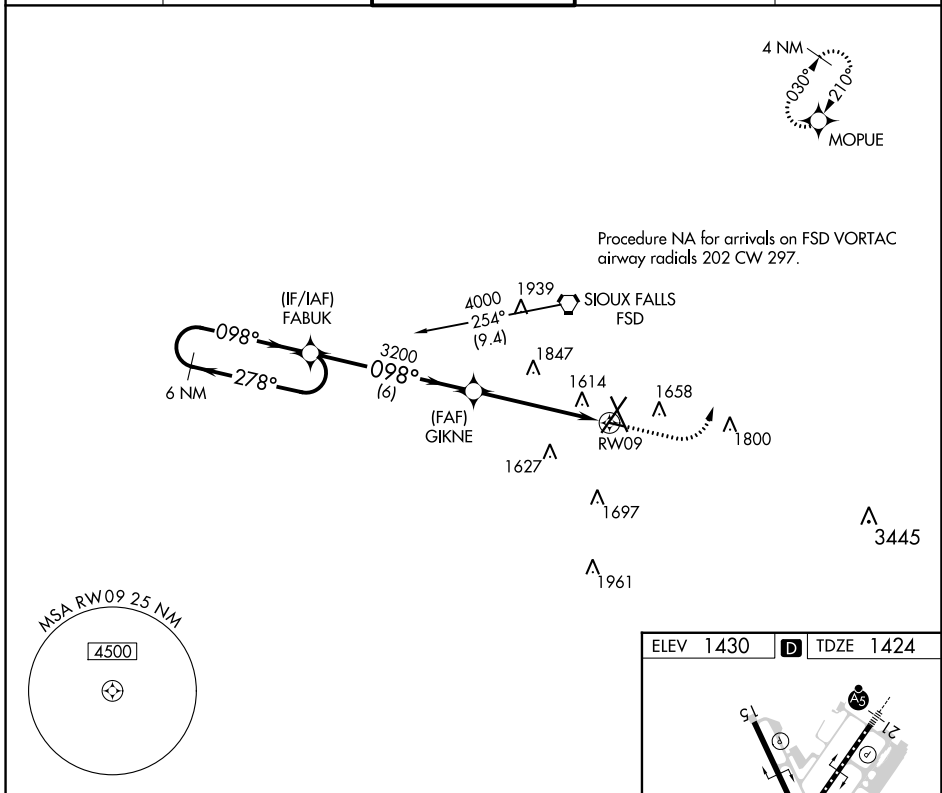
# RNAV (GPS) RWY 9

JOE FOSS FLD (FSD)

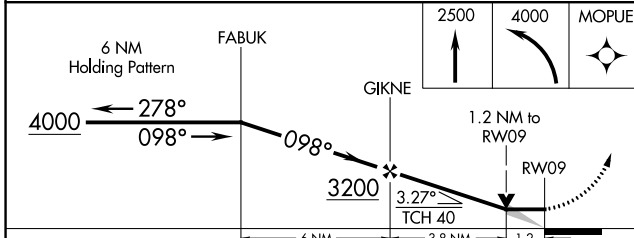
RNP APCH.  
 ▼ ASR Rwy 9 helicopter visibility reduction below 3/4 SM NA.  
 ❄️ -31°C

MISSED APPROACH: Climb to 2500 then climbing left turn to 4000 direct MOPUE WP and hold.

ATIS <b>126.6</b>	SIoux FALLS APP CON* <b>125.8 306.2</b>	SIoux FALLS TOWER* <b>118.3 (CTAF) 257.8</b>	GND CON <b>121.9 348.6</b>	UNICOM <b>122.95</b>
----------------------	--	---	-------------------------------	-------------------------



Procedure NA for arrivals on FSD VORTAC airway radials 202 CW 297.



ELEV 1430	D TDZE 1424
-----------	-------------

TDZ/CL Rwy 21  
 MRL Rwy 9-27  
 REIL Rws 15 and 33  
 HIRL Rws 3-21 and 15-33

NC-1, 22 FEB 2024 to 21 MAR 2024

NC-1, 22 FEB 2024 to 21 MAR 2024