

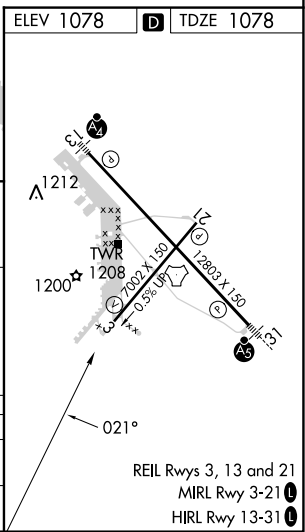
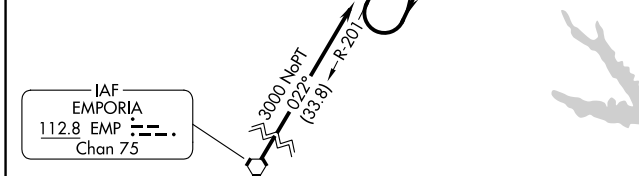
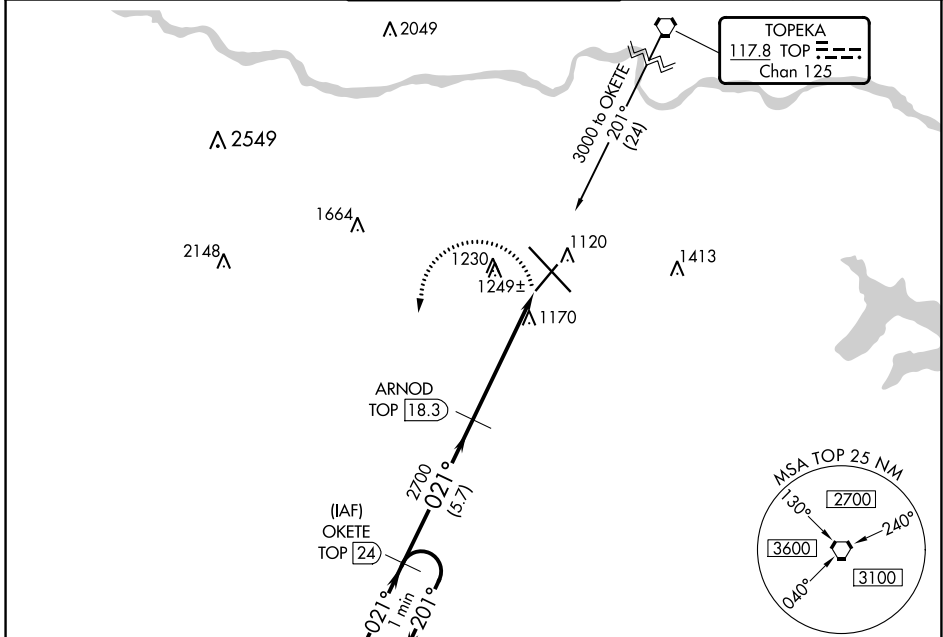
VORTAC TOP 117.8 Chan 125	APP CRS 021°	Rwy Idg TDZE Apt Elev	7001 1078 1078
---	------------------------	-----------------------------	---

VOR/DME or TACAN RWY 3

TOPEKA RGNL (F0E)

MISSED APPROACH: Climbing left turn to 3000 via TOP R-201 to OKETE/24 DME and hold.

ATIS 128.25	KANSAS CITY CENTER 123.8 343.7	FORBES TOWER* 120.8 (CTAF) 340.2	GND CON 118.425 275.8	UNICOM 122.95
-----------------------	--	--	---------------------------------	-------------------------



One Minute Holding Pattern	OKETE TOP 24	ARNOD TOP 18.3	3000 TOP R-201	OKETE TOP 24
3000	← 201°	→ 021°	2700	TOP 14.3
			2.87%	TOP 13.1
			TCH 51	
			5.7 NM	4 NM
				1.2

CATEGORY	A	B	C	D
S-3	1520-1	442 (500-1)	1520-1 $\frac{3}{8}$	442 (500-1 $\frac{3}{8}$)
CIRCLING	1520-1 442 (500-1)	1580-1 502 (600-1)	1580-1 $\frac{1}{2}$ 502 (600-1 $\frac{1}{2}$)	1700-2 622 (700-2)