

# PIKES TWO DEPARTURE

AL-5677 (FAA)

NORTHERN COLORADO RGNL (FNL)  
FORT COLLINS/LOVELAND, COLORADO

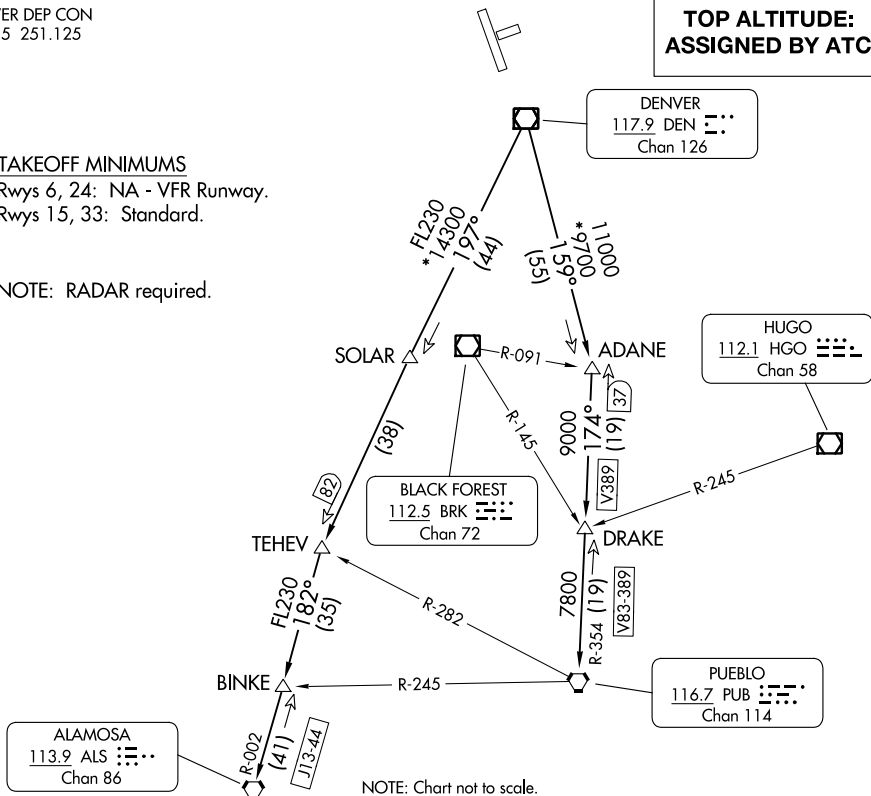
DENVER DEP CON  
134.85 251.125

**TOP ALTITUDE:  
ASSIGNED BY ATC**

### TAKEOFF MINIMUMS

Rwys 6, 24: NA - VFR Runway.  
Rwys 15, 33: Standard.

NOTE: RADAR required.



### DEPARTURE ROUTE DESCRIPTION

**TAKEOFF RUNWAY 33:** Climbing right turn to assigned altitude and heading between 350° CW 150° from DER, thence . . . .

**TAKEOFF RUNWAY 15:** Climb to assigned altitude and heading between 180° CCW 350° from end of runway, thence . . . .

. . . .RADAR vectors to assigned route. Expect filed altitude 10 minutes after departure.

**LOST COMMUNICATIONS:** If no transmissions are received within one minute after departure, maintain assigned heading until 7000 feet, then climb to filed altitude via direct DEN VOR/DME, thence via assigned transition. If filed altitude is above 10000 feet, cross DEN VOR/DME at or above 11000 feet.

**ALAMOSA TRANSITION (PIKES2.ALS):** From over DEN VOR/DME on DEN R-197 to TEHEV, then on ALS R-002 to ALS VORTAC.

**BINKE TRANSITION (PIKES2.BINKE):** From over DEN VOR/DME on DEN R-197 to TEHEV, then on ALS R-002 to BINKE.

**PUEBLO TRANSITION (PIKES2.PUB):** From over DEN VOR/DME on DEN R-159 to ADANE, then on PUB R-354 to PUB VORTAC.

# PIKES TWO DEPARTURE

(PIKES2.DEN) 30JAN20

FORT COLLINS/LOVELAND, COLORADO  
NORTHERN COLORADO RGNL (FNL)

SW-1, 22 FEB 2024 to 21 MAR 2024

SW-1, 22 FEB 2024 to 21 MAR 2024