

WAAS CH 61002 W28A	APP CRS 276°	Rwy Idg TDZE Apt Elev	8394 7 65
--	------------------------	-----------------------------	--------------------------------------

RNAV (GPS) Y RWY 28R

FORT LAUDERDALE/HOLLYWOOD INTL (FLL)

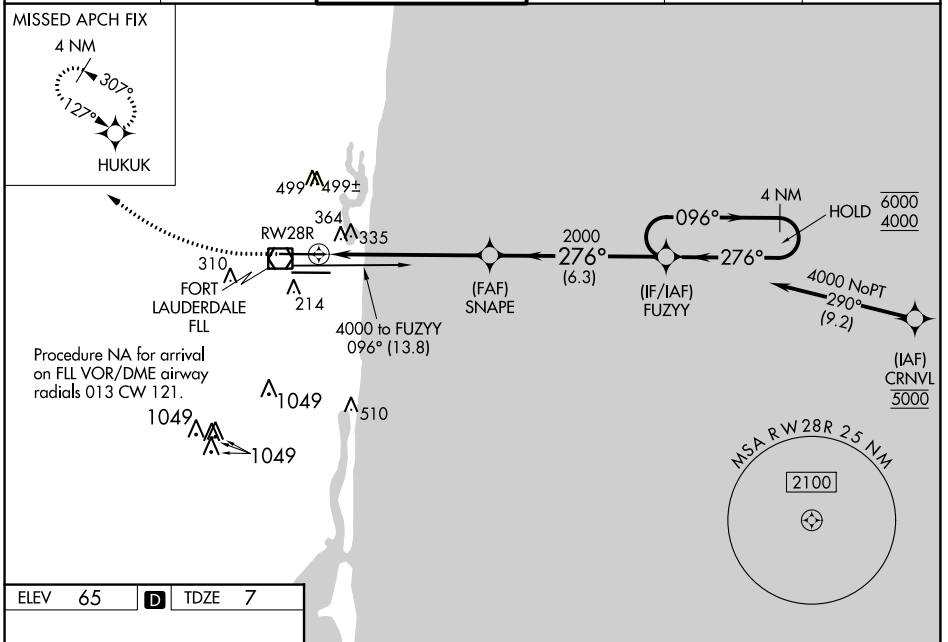
RNP APCH - GPS.

Simultaneous approach authorized. Use of FD or AP required during simultaneous operations. LNAV procedure NA during simultaneous operations. Inop table does not apply to LPV all Cats. For uncompensated Baro-VNAV systems, LNAV/VNAV NA below 7°C or above 54°C. For inop ALS, increase LNAV/VNAV all Cats visibility to 1½ SM and LNAV C/D to 1¼ SM.

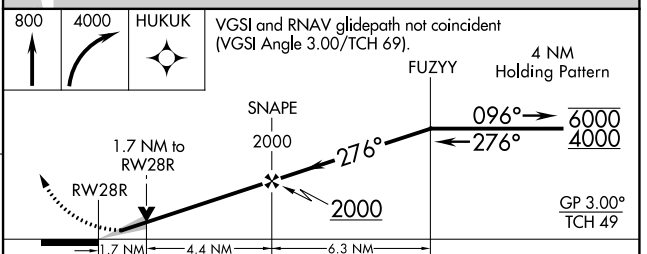
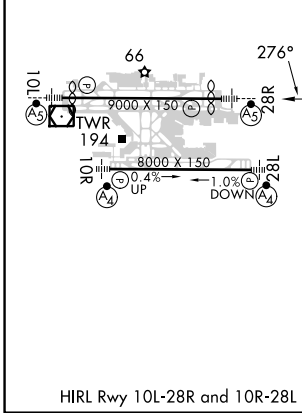
MALSRL

MISSED APPROACH: Climb to 800 then climbing right turn to 4000 direct HUKUK and hold, continue climb-in-hold to 4000.

D-ATIS 135.0	MIAMI APP CON 133.775 285.6	FORT LAUDERDALE TOWER 119.3 257.8	GND CON 121.4	CLNC DEL 128.4	CPDLC
------------------------	---------------------------------------	--	-------------------------	--------------------------	-------



ELEV 65	D	TDZE 7
---------	----------	--------



CATEGORY	A	B	C	D
LPV DA		257/40	250 (200-¾)	
LNAV/VNAV DA		581-1¼	574 (600-1¼)	
LNAV MDA	620/24	613 (600-½)	620-1¾ 613 (600-1¾)	
C CIRCLING	680-1	615 (700-1)	800-2 735 (800-2)	800-2¼ 735 (800-2¼)

SE-3, 22 FEB 2024 to 21 MAR 2024

SE-3, 22 FEB 2024 to 21 MAR 2024