

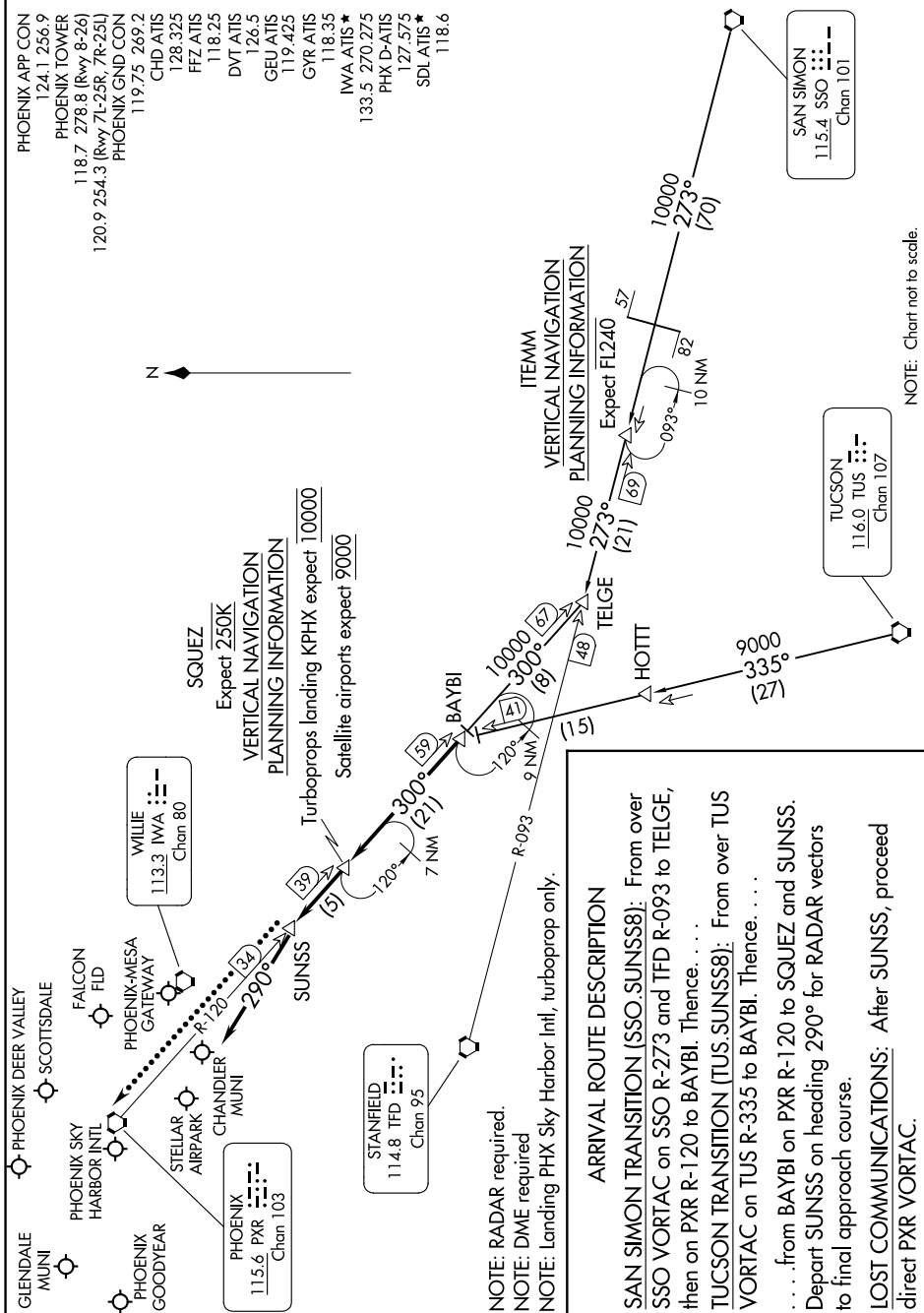
(BAYBI.SUNSS8) 23334

# SUNSS EIGHT ARRIVAL

AL-322 (FAA)

PHOENIX, ARIZONA

SW-4, 22 FEB 2024 to 21 MAR 2024



NOTE: RADAR required.  
NOTE: DME required  
NOTE: Landing PHX Sky Harbor Intl, turboprop only.

**ARRIVAL ROUTE DESCRIPTION**

SAN SIMON TRANSITION (SSO.SUNSS8): From over SSO VORTAC on SSO R-273 and TFD R-093 to TELGE, then on PXR R-120 to BAYBI. Thence. . . .

TUCSON TRANSITION (TUS.SUNSS8): From over TUS VORTAC on TUS R-335 to BAYBI. Thence. . . .

. . . from BAYBI on PXR R-120 to SQUEZ and SUNSS. Depart SUNSS on heading 290° for RADAR vectors to final approach course.

LOST COMMUNICATIONS: After SUNSS, proceed direct PXR VORTAC.

# SUNSS EIGHT ARRIVAL

(BAYBI.SUNSS8) 27APR17

PHOENIX, ARIZONA

SW-4, 22 FEB 2024 to 21 MAR 2024

NOTE: Chart not to scale.

SAN SIMON  
115.4 SSO ☉☉☉☉  
Chan 101

TUCSON  
116.0 TUS ☉☉☉☉  
Chan 107

STANFIELD  
114.8 TFD ☉☉☉☉  
Chan 95

WILLIE IWA  
113.3 IWA ☉☉☉☉  
Chan 80

PHOENIX APP CON  
124.1 256.9  
PHOENIX TOWER  
118.7 278.8 (Rwy 8-26)  
118.7 278.8 (Rwy 7L-25R, 7R-25L)  
PHOENIX GND CON  
120.9 254.3 (Rwy 7L-25R, 7R-25L)  
119.75 269.2  
CHD ATIS  
128.325  
FFZ ATIS  
118.25  
DVT ATIS  
126.5  
GEU ATIS  
119.425  
GYR ATIS  
118.35  
118.35  
IWA ATIS ★  
133.5 270.275  
PHX D-ATIS  
127.575  
SDL ATIS ★  
118.6