

WAAS CH <b>72940</b> <b>W15A</b>	APP CRS <b>145°</b>	Rwy Idg TDZE Apt Elev	<b>4002</b> <b>44</b> <b>45</b>
--	------------------------	-----------------------------	---------------------------------------

# RNAV (GPS) RWY 15

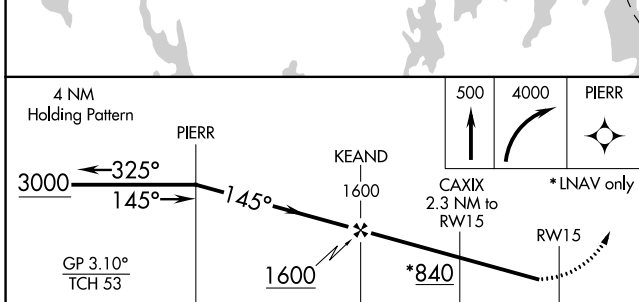
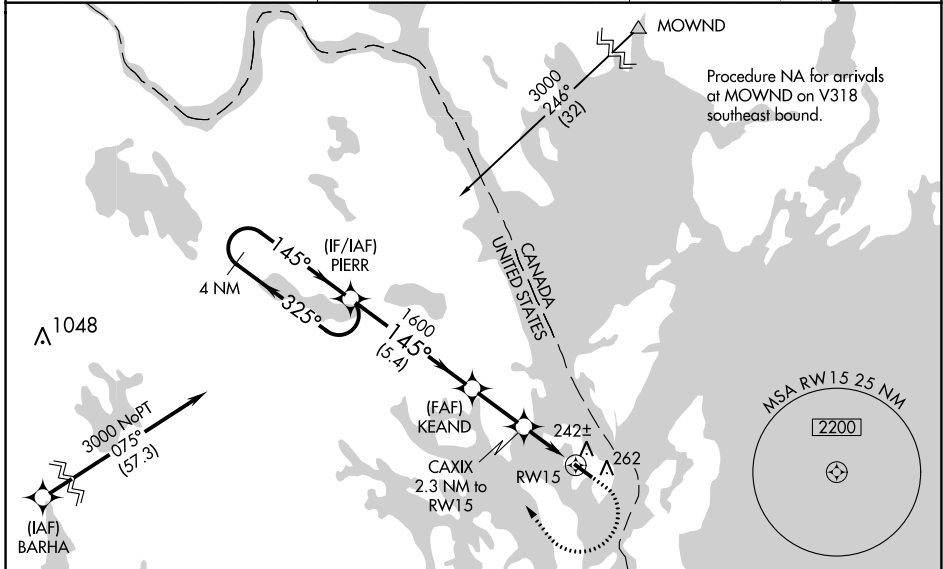
EASTPORT MUNI (EPM)

RNP APCH

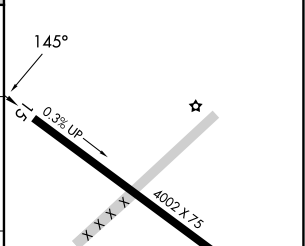
For uncompensated Baro-VNAV systems, LNAV/VNAV NA below -15°C or above 47°C. Rwy 15 helicopter visibility reduction below 1 SM NA. When local altimeter setting not received, use Hancock County-Bar Harbor altimeter setting: increase LPV DA to 462 feet and all visibilities  $\frac{3}{8}$  SM; increase LNAV/VNAV DA to 565 feet and all visibilities  $\frac{1}{2}$  SM; increase all MDA 160 feet and LNAV visibility Cat C and D  $\frac{3}{8}$  SM and Circling visibility Cat C and D  $\frac{1}{2}$  SM. Baro-VNAV NA when using Hancock County-Bar Harbor altimeter setting. Straight-in Rwy 15 NA at night, Circling Rwy 15 NA at night.

**MISSED APPROACH:**  
Climb to 500 then climbing right turn to 4000 direct PIERR and hold, continue climb-in-hold to 4000.

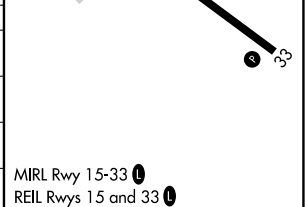
AWOS-AV <b>122.8</b>	BOSTON CENTER <b>124.25 290.5</b>	UNICOM <b>122.8 (CTAF)</b>
-------------------------	--------------------------------------	-------------------------------



ELEV 45	TDZE 44
---------	---------



CATEGORY	A	B	C	D
LPV DA		309-1	265 (300-1)	
LNAV/VNAV DA		412-1¼	368 (400-1¼)	
LNAV MDA	500-1	456 (500-1)	500-1¾	456 (500-1¾)
<b>C</b> CIRCLING	580-1	535 (600-1)	580-1½ 535 (600-1½)	720-2¼ 675 (700-2¼)



NE-1, 22 FEB 2024 to 21 MAR 2024

NE-1, 22 FEB 2024 to 21 MAR 2024