

RNAV (GPS) RWY 17C

WAAAS Chan 89616 W17A	APCH CRS 175°	Rwy Idg 9217 TDZE 1277 Arprt Elev 1307	AL-135 [USAF]	VANCE AFB (KEND)
---	-------------------------	---	---------------	------------------

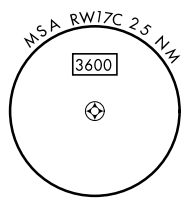
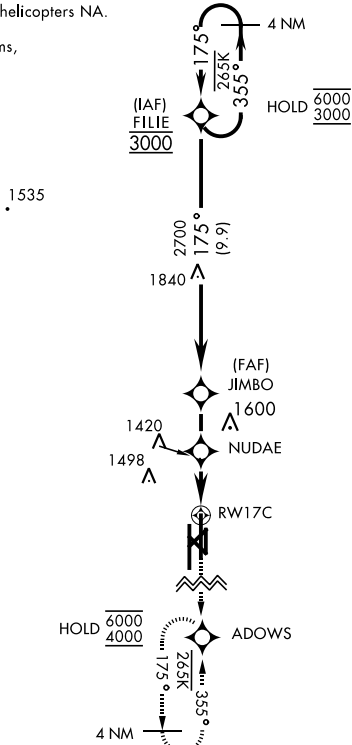
RNP APCH	SALSF A2	MISSED APPROACH: Climb to 4000 direct ADOWS and hold.
----------	--------------------	---

* When ALS inop, increase RVR to 45, vis to 7/8 miles.
 ** When ALS inop, increase CAT AB RVR to 55 and vis to 1 mile, CAT CDE RVR to 60 and vis to 1 1/2 miles.

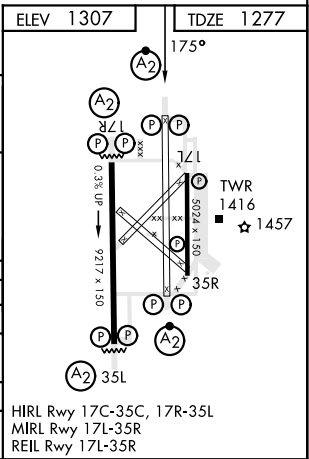
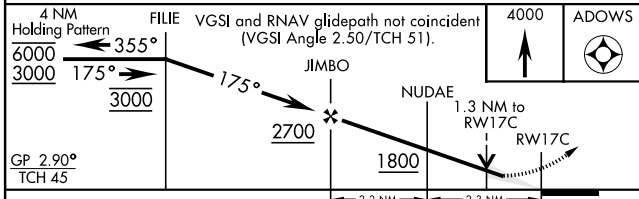
ATIS ★ 115.4 263.15	APP CON 125.45 388.2 (E) 126.75 346.325 (W)	TOWER ★ 124.05 259.1	GND CON 121.675 289.4	CLNC DEL 225.4
-------------------------------	---	--------------------------------	---------------------------------	--------------------------

*** Circling visibility reduction by helicopters NA.

For uncompensated Baro-VNAV systems,
LNAV/VNAV NA below -16°C at
or above 54°C.



EMERG SAFE ALT 100 NM 4500



CATEGORY	A	B	C	D	E
LPV DA	1477/40		200	(200-34)	
LNAV/VNAV DA *	1567/40		290	(300-34)	
LNAV MDA **	1680/40	403 (400-34)	1680/50	403 (400-1)	
C CIRCLING ***	1760-1	453 (500-1)	1800-1 1/2 493 (500-1 1/2)	1900-2 593 (600-2)	2300-3 993 (1000-3)

HIRL Rwy 17C-35C, 17R-35L
MIRL Rwy 17L-35R
REIL Rwy 17L-35R

RNAV (GPS) RWY 17C

SC-1, 22 FEB 2024 to 21 MAR 2024

SC-1, 22 FEB 2024 to 21 MAR 2024