

|  |                        |   |
|--|------------------------|---|
| LOC/DME I-DXU<br><b>111.9</b><br>Chan 56 | APP CRS<br><b>353°</b> | Rwy Idg<br>TDZE<br>Apt Elev<br><b>16000</b><br><b>5327</b><br><b>5434</b> |
|--|------------------------|---|

# ILS RWY 34L (CAT II & III)

DENVER INTL (DEN)

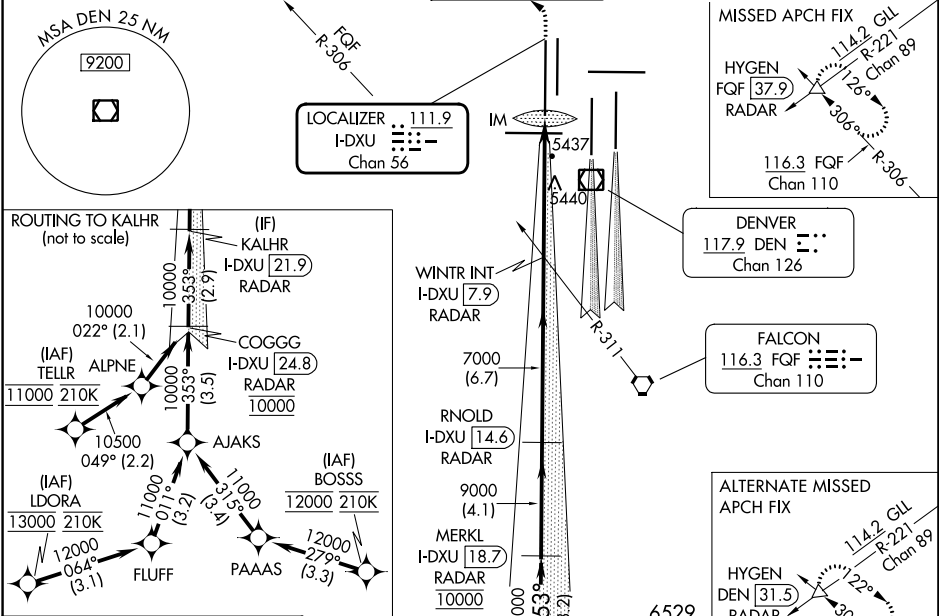
RNAV-1 GPS or RADAR required for procedure entry. From LDORA, BOSSA, TELLR: RNAV-1 GPS required. DME or RADAR required.

**CAUTION** CAT II: RVR 1000 authorized with specific OPSPEC, MSPEC, or LOA approval and use of autoland or HUD to touchdown. Simultaneous approach authorized with Rwy 35L/R.

ALSF-2

MISSED APPROACH: Climb to 5800 then climbing left turn to 10000 on heading 270° and FQF VORTAC R-306 to HYGEN/FQF 37.9 DME/RADAR and hold.

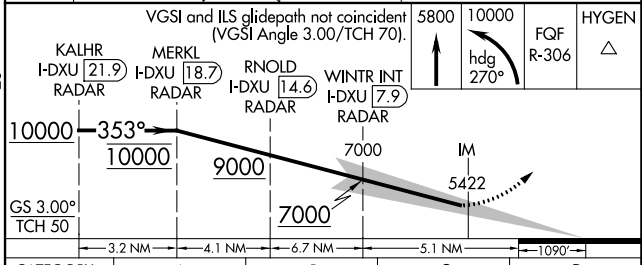
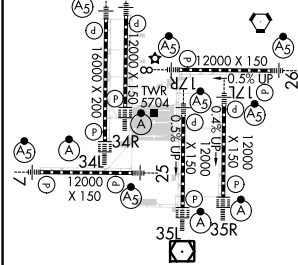
|  |   |  |                                     |                                  |                           |       |
|--|---|--|-------------------------------------|----------------------------------|---------------------------|-------|
| D-ATIS<br>ARR <b>125.6 379.9</b><br>DEP <b>134.025</b> | DENVER APP CON<br><b>119.3 307.3</b><br>(NORTH) | DENVER APP CON<br><b>120.35 379.3</b><br>(SOUTH) | DENVER TOWER<br><b>135.3 351.95</b> | GND CON<br><b>121.35 379.175</b> | CLNC DEL<br><b>118.75</b> | CPDLC |
|--|---|--|-------------------------------------|----------------------------------|---------------------------|-------|



SW-1, 22 FEB 2024 to 21 MAR 2024

SW-1, 22 FEB 2024 to 21 MAR 2024

|           |          |           |
|-----------|----------|-----------|
| ELEV 5434 | <b>D</b> | TDZE 5327 |
|-----------|----------|-----------|



|           |                              |   |   |   |
|-----------|------------------------------|---|---|---|
| CATEGORY  | A                            | B | C | D |
| S-ILS 34L | CAT II RA 108/12 100 DA 5427 |   |   |   |
| S-ILS 34L | CAT III RVR 03               |   |   |   |

## CATEGORY II & III ILS - SPECIAL AIRCREW & AIRCRAFT CERTIFICATION REQUIRED