

WAAS CH 56234 W18A	APP CRS 184°	Rwy Idg 3800 TDZE 835 Apt Elev 835
--	------------------------	---

RNAV (GPS) RWY 18

DUPONT-LAPEER (D95)

⚠ DME/DME RNP-0.3 NA. Helicopter visibility reduction below ¾ SM NA. When local altimeter setting not received, use Flint altimeter setting and increase all MDAs 60 feet and increase LP Cat C visibility ½ mile, LNAV Cat C and Circling Cat C visibility ¼ mile. Circling NA to Rwy 9 and 27.

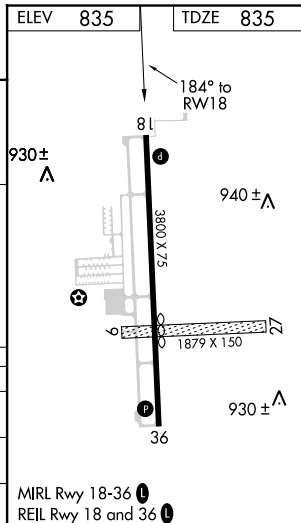
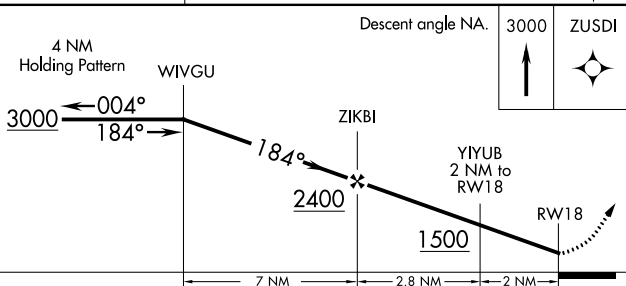
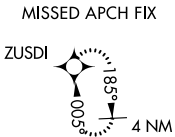
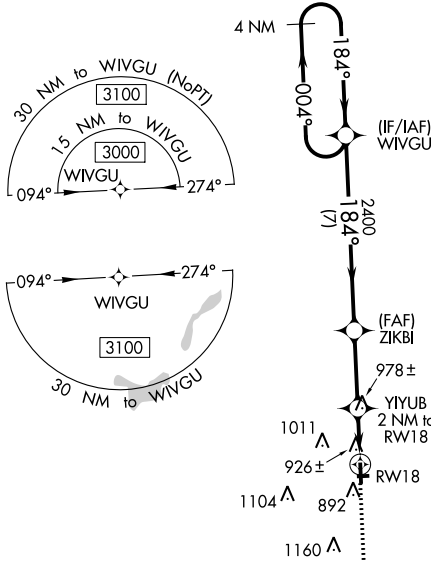
MISSED APPROACH:
Climb to 3000 direct ZUSDI and hold.

AWOS-3P
134.050

GREAT LAKES APP CON ★
118.8 257.9

UNICOM
123.0 (CTAF) ①

△ 2013



CATEGORY	A	B	C	D
LP MDA	1180-1 345 (400-1)			NA
LNAV MDA	1240-1	405 (500-1)	1240-1½ 405 (500-1½)	NA
C CIRCLING	1300-1 465 (500-1)	1380-1 545 (600-1)	1460-1¾ 625 (700-1¾)	NA

EC-1, 09 SEP 2021 to 07 OCT 2021

EC-1, 09 SEP 2021 to 07 OCT 2021

WAAS CH 60934 W36A	APP CRS 004°	Rwy Idg TDZE Apt Elev	3800 832 835
--	------------------------	-----------------------------	---

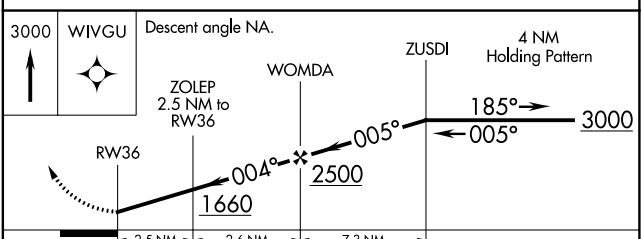
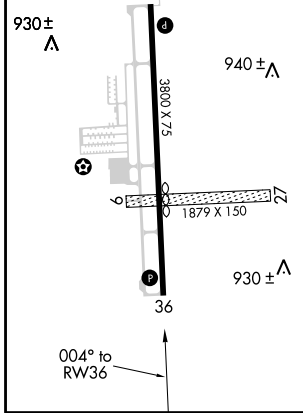
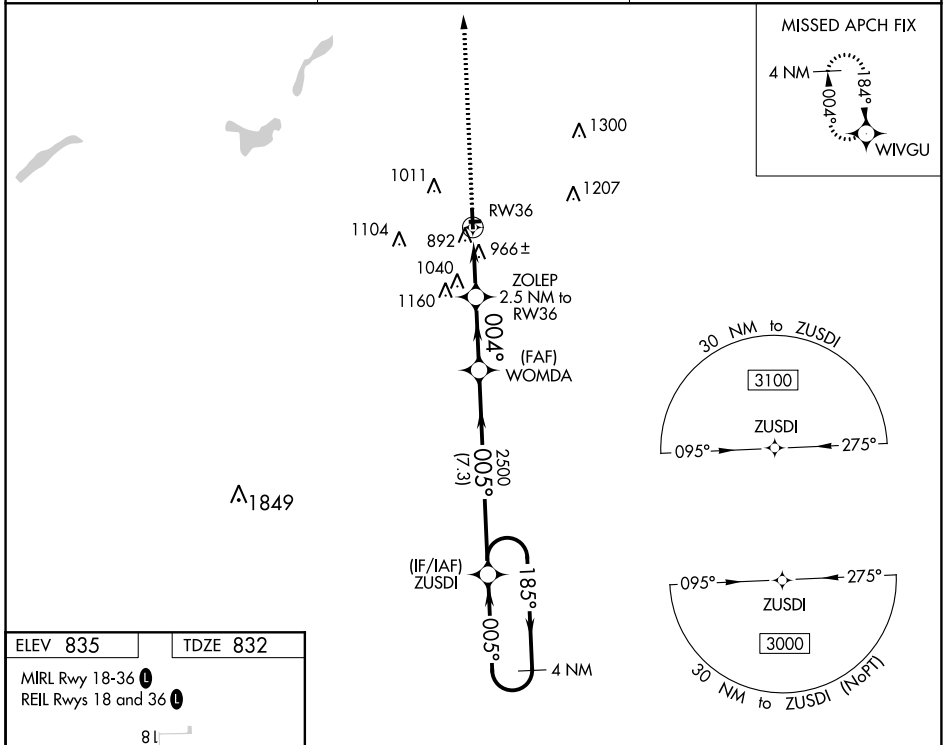
RNAV (GPS) RWY 36

DUPONT-LAPEER (D95)

▽ DME/DME RNP-0.3 NA. Helicopter visibility reduction below 3/4 SM NA. When local altimeter setting not received, use Flint altimeter setting and increase all MDA 60 feet and increase LNAV Cat C visibility 1/8 mile and LP Cat C and Circling Cat C visibility 1/4 mile. Circling NA to Rwy 9 and 27.

▲ MISSED APPROACH: Climb to 3000 direct WIVGU and hold.

AWOS-3P 134.050	GREAT LAKES APP CON ★ 118.8 257.9	UNICOM 123.0 (CTAF) ①
---------------------------	---	--



CATEGORY	A	B	C	D
LP MDA	1220-1	388 (400-1)	1220-1 1/8 388 (400-1 1/8)	NA
LNAV MDA	1260-1	428 (500-1)	1260-1 1/4 428 (500-1 1/4)	NA
☑ CIRCLING	1300-1 465 (500-1)	1380-1 545 (600-1)	1460-1 3/4 625 (700-1 3/4)	NA

EC-1, 09 SEP 2021 to 07 OCT 2021

EC-1, 09 SEP 2021 to 07 OCT 2021

VORTAC FNT 116.9 Chan 116	APP CRS 080°	Rwy Idg TDZE Apt Elev N/A N/A 835
---	------------------------	---

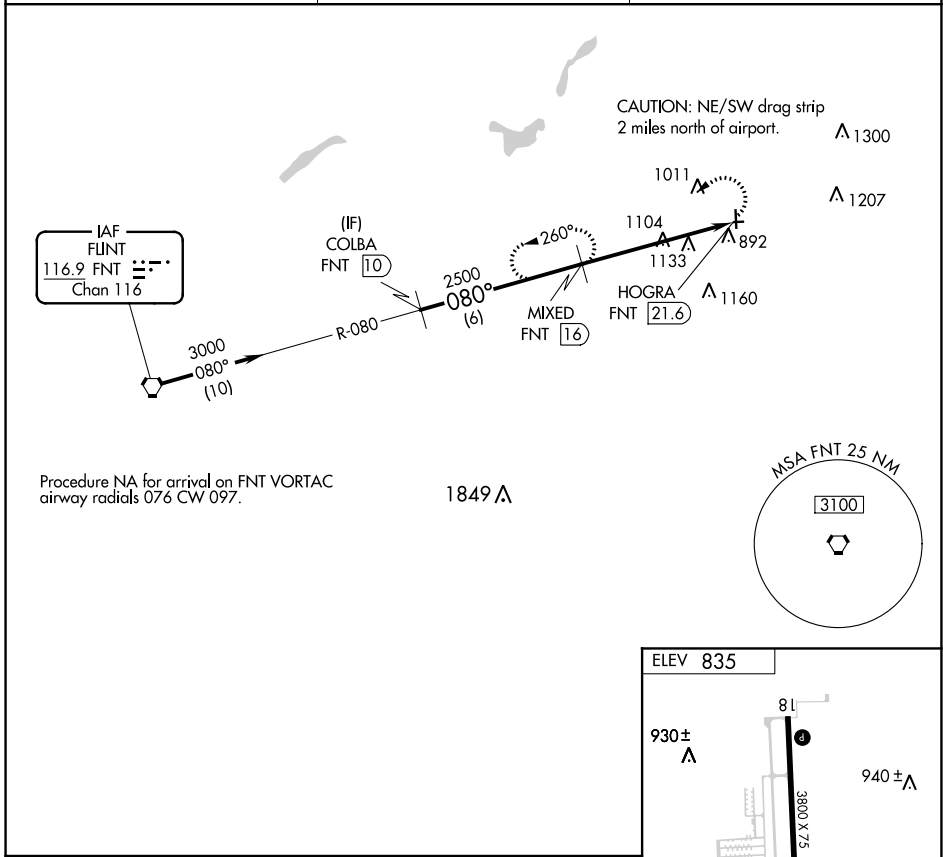
VOR-A
DUPONT-LAPEER (D95)

DME required.

⚠ Circling NA to Rwy 9 and 27. Circling Rwy 18 NA at night. Rwy 18 helicopter visibility reduction below 1 SM NA.

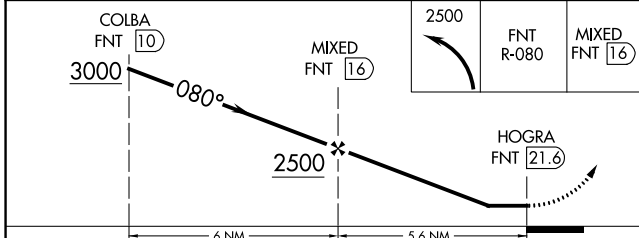
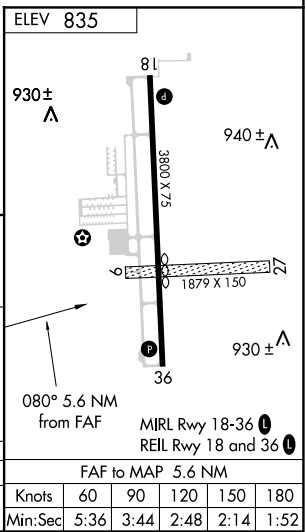
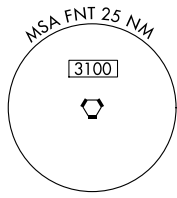
MISSED APPROACH: Climbing left turn to 2500 on FNT VORTAC R-080 to MIXED 16 DME and hold.

AWOS-3P 134.050	GREAT LAKES APP CON ★ 118.8 257.9	UNICOM 123.0 (CTAF) 0
---------------------------	---	--



Procedure NA for arrival on FNT VORTAC
airway radials 076 CW 097.

1849 A



CATEGORY	A	B	C	D	FAF to MAP 5.6 NM					
Ⓢ CIRCLING	1400-1	565 (600-1)	1460-1¾ 625 (700-1¾)	NA	Knots	60	90	120	150	180
					Min:Sec	5:36	3:44	2:48	2:14	1:52

EC-1, 09 SEP 2021 to 07 OCT 2021

EC-1, 09 SEP 2021 to 07 OCT 2021