

WAAS CH <b>93707</b> <b>W13A</b>	APP CRS <b>130°</b>	Rwy Idg <b>5000</b> TDZE <b>2503</b> Apt Elev <b>2503</b>
--	------------------------	---

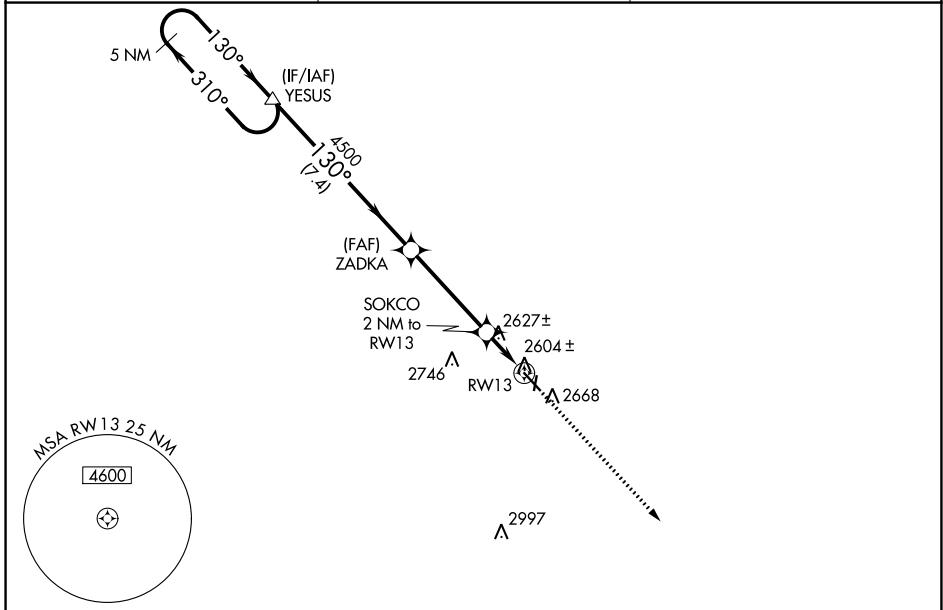
# RNAV (GPS) RWY 13

COZAD MUNI (CZD)

**NA** Circling NA to Rwy 18 and 36. Baro-VNAV NA. DME/DME RNP-0.3 NA.  
 Use Lexington altimeter setting; when not received, use North Platte altimeter setting and increase all DAs 79 feet and LPV and LNAV/VNAV visibility ¼ mile all Cats, increase all MDAs 80 feet and Circling Cat C visibility ¼ mile. Helicopter visibility reduction below ¾ SM NA.

MISSED APPROACH: Climb to 5500 direct TOKKU and hold.

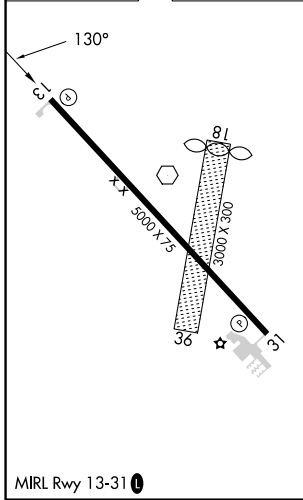
LXN AWOS-3 <b>121.025</b>	DENVER CENTER <b>132.7 226.675</b>	UNICOM <b>122.8 (CTAF) 0</b>
------------------------------	---------------------------------------	---------------------------------



NC-2, 22 FEB 2024 to 21 MAR 2024

NC-2, 22 FEB 2024 to 21 MAR 2024

ELEV <b>2503</b>	TDZE <b>2503</b>
------------------	------------------



5 NM Holding Pattern		YESUS	5500 TOKKU	
5000 ← 310°		→ 130°	ZADKA	SOKCO 2 NM to RWY 13
GP 3.00° TCH 52		4500	*3180	RWY 13
		7.4 NM	4 NM	2 NM
CATEGORY	A	B	C	D
LPV DA	2875-1¼	372 (400-1¼)		NA
LNAV/VNAV DA	2913-1½	410 (500-1½)		NA
LNAV MDA	2920-1	417 (500-1)	2920-1¼ 417 (500-1¼)	NA
<b>C</b> CIRCLING	3080-1	577 (600-1)	3140-1¾ 637 (700-1¾)	NA