

LOC I-DQG	APP CRS	Rwy Idg	10000
111.7	003°	TDZE	707
		Apt Elev	748

ILS or LOC RWY 36C

CHARLOTTE/DOUGLAS INTL (CLT)

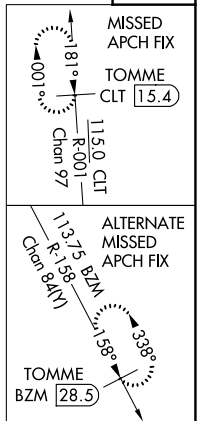
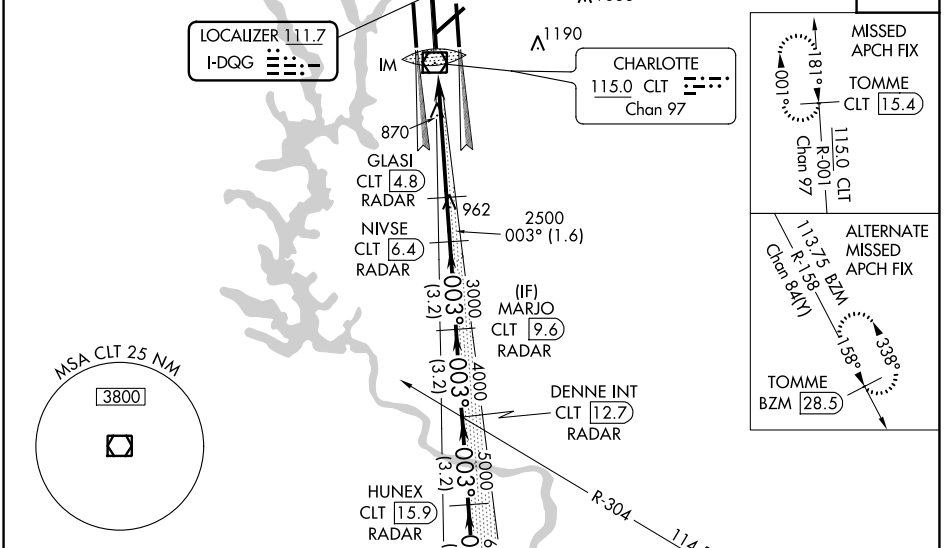
RADAR required for procedure entry. DME or RADAR required.

⚠ Circling NA at night. Simultaneous approach authorized. DQG ILS LLZ Rwy 36C unusable for rollout guidance.

ALSF-2
A

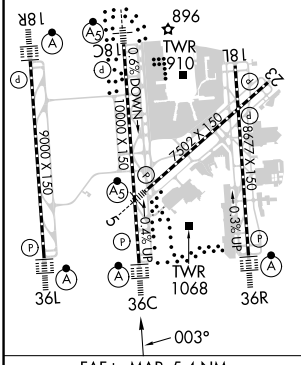
MISSED APPROACH: Climb to 3000 on CLT VOR/DME R-001 to TOMME/CLT 15.4 DME and hold.

D-ATIS	CHARLOTTE APP CON	CHARLOTTE TOWER	GND CON	CLNC DEL
ARR 121.15	(001°-119°) 128.32	(Rwys 18L-36R) 118.1 257.8	121.8 348.6 (WEST)	127.15
DEP 132.1	(120°-295°) 120.05	(Rwy 18C-36C) 126.4 257.8	121.9 348.6 (EAST)	348.6
	(296°-360°) 134.75	(Rwy 18R-36L) 133.35 257.8		
	(180°-359°) 257.2			
	(360°-179°) 307.8			



ELEV 748	D	TDZE 707
----------	----------	----------

HIRL all Rwys
REIL Rwys 18L and 23
TDZ/CL Rwys 18R, 36L, 36C and 36R



3000	CLT R-001	TOMME CLT 15.4	VGS and ILS glidepath not coincident (VGS Angle 3.00/TCH 72).				SOLMN CLT 22.2 RADAR
	GLASI CLT 4.8 RADAR	NIVSE CLT 6.4 RADAR	MARJO CLT 9.6 RADAR	DENNE INT CLT 12.7 RADAR	HUNEX CLT 15.9 RADAR	KRISL CLT 19 RADAR	
	IM 2500	3000	4000	5000	6000	7000	
	0.2	0.2 NM	1.6 NM	3.2 NM	3.2 NM	3.2 NM	
	003°	8000	GS 3.00° TCH 57				

FAF to MAP 5.4 NM					
Knots	60	90	120	150	180
Min:Sec	5:24	3:36	2:42	2:10	1:48

CATEGORY	A	B	C	D
S-ILS 36C	907/18 200 (200-1/2)			
S-LOC 36C	1120/24 413 (400-1/2)			
C CIRCLING	1380-1 632 (700-1)	1500-2 1/4 752 (800-2 1/4)	1500-2 1/2 752 (800-2 1/2)	

SE-2, 22 FEB 2024 to 21 MAR 2024

SE-2, 22 FEB 2024 to 21 MAR 2024