

APP CRS	Rwy Idg	<b>3200</b>
<b>003°</b>	TDZE	<b>80</b>
	Apt Elev	<b>80</b>

# RNAV (GPS) RWY 36

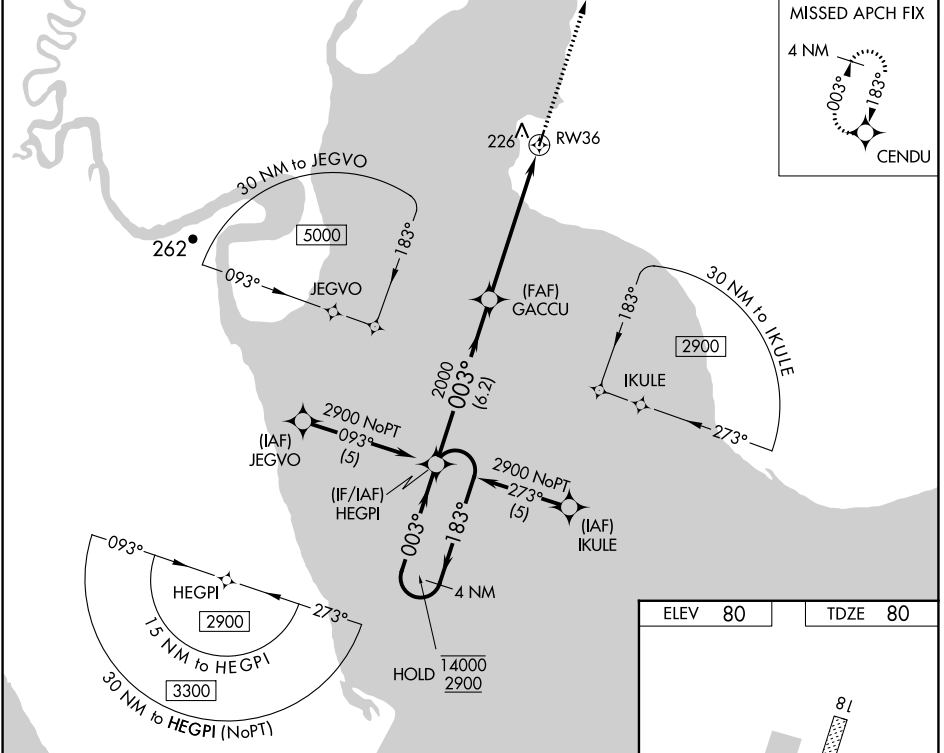
CLARKS POINT (CLP) (PFCL)

RNP APCH-GPS.

**⚠** Rwy 36 helicopter visibility reduction below 1 SM NA. Rwy 36 Straight-in and Circling minimums NA at night. When local altimeter setting not received, use Dillingham altimeter setting and increase all MDAs 40 feet and LNAV visibility Cat C/D 1/8 SM.

MISSED APPROACH: Climb to 2900 direct CENDU and hold.

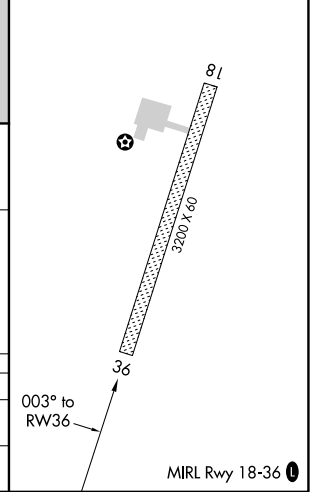
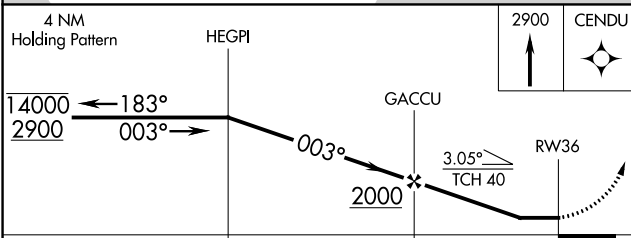
AWOS-3P <b>121.45</b>	ANCHORAGE CENTER <b>132.75 282.35</b>	CTAF <b>122.9</b>
--------------------------	--	----------------------



AK, 25 JAN 2024 to 21 MAR 2024

AK, 25 JAN 2024 to 21 MAR 2024

ELEV 80	TDZE 80
---------	---------



CATEGORY	A	B	C	D
LNAV MDA	660-1	580 (600-1)	660-1 5/8	580 (600-1 5/8)
CIRCLING	660-1 580 (600-1)	700-1 620 (700-1)	700-1 3/4 620 (700-1 3/4)	700-2 620 (700-2)