

WAAS CH 90199 W28A	APP CRS 288°	Rwy Idg 6500 TDZE 341 Apt Elev 342
--	------------------------	---

RNAV (GPS) RWY 28

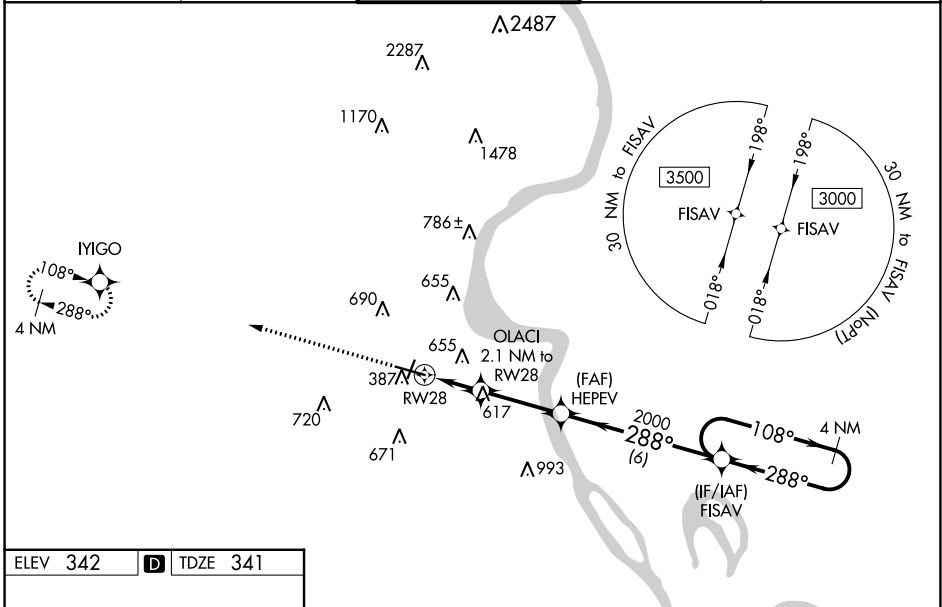
CAPE GIRARDEAU RGNL (CGI)

⚠ DME/DME RNP-0.3 NA. When local altimeter setting not received, use Cairo Rgnl altimeter setting and increase all DA 48 feet and all MDA 60 feet; increase LPV all Cats, LNAV/VNAV all Cats, and Circling Cat C/D visibility ¼ mile and LNAV Cat C/D visibility ½ mile. VDP NA when using Cairo Rgnl altimeter setting. Helicopter visibility reduction below ¾ SM NA. For inop ODALS, increase LPV all Cats, LNAV/VNAV all Cats and LNAV Cat C/D visibilities ½ mile. When using Cairo Rgnl altimeter setting, for inop ODALS, increase LPV all Cats, LNAV/VNAV all Cats and LNAV Cat C/D visibilities ½ mile. Baro-VNAV NA.



MISSED APPROACH:
Climb to 3000 direct
IYIGO and hold.

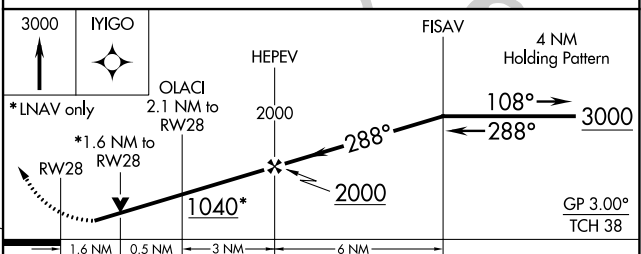
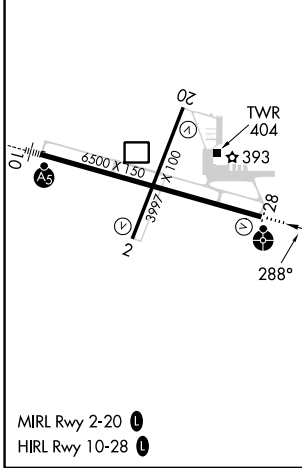
ASOS 120.55	MEMPHIS CENTER 133.65 292.15	CAPE GIRARDEAU TOWER * 125.525 (CTAF) 0	GND CON 121.6	UNICOM 122.95
-----------------------	--	--	-------------------------	-------------------------



NC-3, 22 FEB 2024 to 21 MAR 2024

NC-3, 22 FEB 2024 to 21 MAR 2024

ELEV 342	D	TDZE 341
-----------------	----------	-----------------



CATEGORY	A	B	C	D
LPV DA		723-1½	382 (400-1½)	
LNAV/VNAV DA		821-1½	480 (500-1½)	
LNAV MDA	880-¾	539 (600-¾)	880-1¾	539 (600-1¾)
C CIRCLING	880-1 538 (600-1)	960-1 618 (700-1)	1000-1¾ 658 (700-1¾)	1080-2¼ 738 (800-2¼)