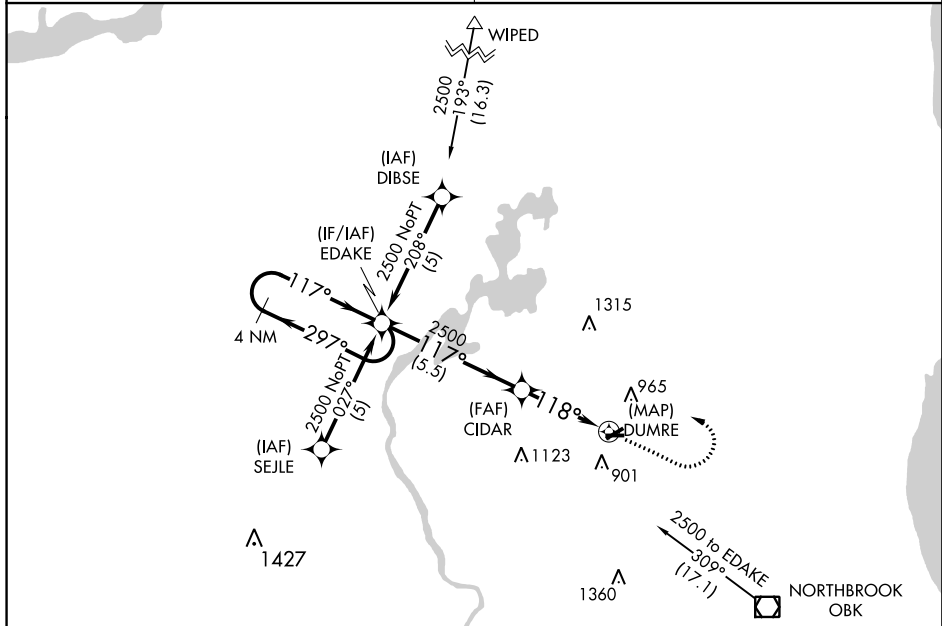


APP CRS	Rwy Idg	N/A
118°	TDZE	N/A
	Apt Elev	788

RNAV (GPS)-B

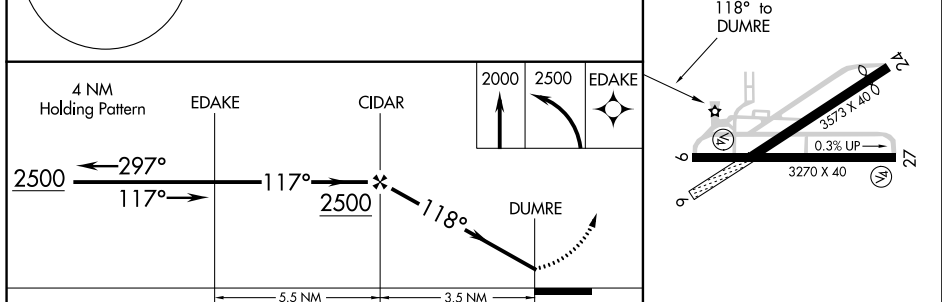
CAMPBELL (C81)

<p>▼ Use Chicago O'Hare altimeter setting. ▲ NA GPS or RNP-0.3 Required. DME/DME-0.3 NA.</p>	<p>MISSED APPROACH: Climb to 2000, then climbing left turn to 2500 direct EDAKE WP and hold.</p>
<p>CHICAGO APP CON 120.55 306.925</p>	<p>UNICOM 122.7 (CTAF)</p>



EC-3: 27 FEB 2020 to 26 MAR 2020

EC-3: 27 FEB 2020 to 26 MAR 2020



CATEGORY	A	B	C	D
CIRCLING	1380-1 592 (600-1)		1380-1½ 592 (600-1½)	NA