

WAAS CH <b>90223</b> <b>W05A</b>	APP CRS <b>055°</b>	Rwy Idg TDZE Apt Elev	<b>5003</b> <b>904</b> <b>921</b>
--	------------------------	-----------------------------	---

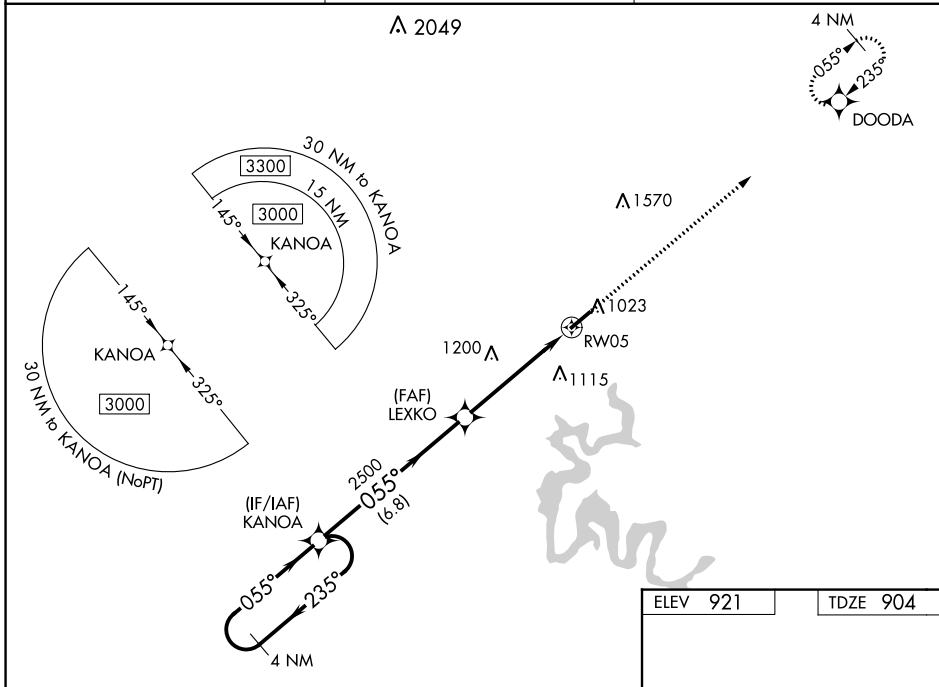
# RNAV (GPS) RWY 5

TAYLOR COUNTY (AAS)

**⚠** Baro-VNAV NA when using Somerset altimeter setting. For uncompensated Baro-VNAV systems, LNAV/VNAV NA below -16°C (4°F) or above 54°C (130°F). DME/DME RNP-0.3 NA. When local altimeter setting not received, use Somerset altimeter setting: increase all DA 89 feet and all MDA 100 feet; increase LPV all Cats visibility ¼ mile, increase LNAV/VNAV all Cats visibility ⅓ mile, increase LNAV Cats C and D visibility ¼ mile, and increase Circling Cat C visibility ¼ mile and Cat D visibility ½ mile. Helicopter visibility reduction below ¼ SM NA. Night landing: Rwy 5 NA for Cat C and D aircraft.

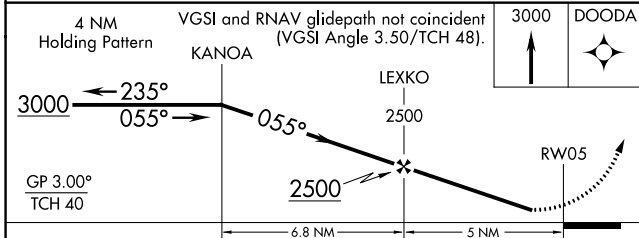
**MISSED APPROACH:**  
Climb to 3000 direct  
DOODA and hold.

AWOS-3 <b>121.125</b>	INDIANAPOLIS CENTER <b>121.175 353.65</b>	UNICOM <b>122.7 (CTAF) 0</b>
--------------------------	--	---------------------------------

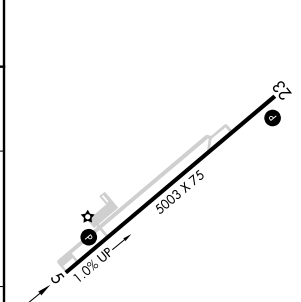


SE-1, 22 FEB 2024 to 21 MAR 2024

SE-1, 22 FEB 2024 to 21 MAR 2024



ELEV 921	TDZE 904
----------	----------



CATEGORY	A	B	C	D
LPV DA		1154-1	250 (300-1)	
LNAV/VNAV DA		1389-1¾	485 (500-1¼)	
LNAV MDA	1340-1	436 (500-1)	1340-1¼	436 (500-1¼)
<b>C</b> CIRCLING	1380-1 459 (500-1)	1400-1 479 (500-1)	1480-1½ 559 (600-1½)	1660-2¼ 739 (800-2¼)

MIRL Rwy 5-23 **0**  
REIL Rws 5 and 23 **0**