

APP CRS 059°	Rwy Idg TDZE Apt Elev	N/A N/A 669
------------------------	-----------------------------	--

RNAV (GPS)-B

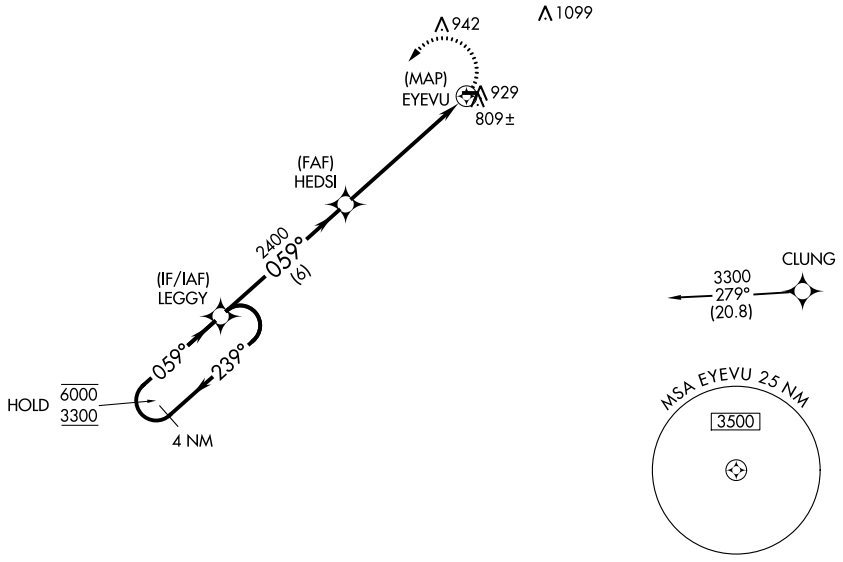
PINE HILL (9G6)

RNP APCH - GPS

NA Rwy 10 and 28 helicopter visibility reduction below 1 SM NA. Use Buffalo Niagara Intl altimeter setting; when not received, use Niagara Falls Intl altimeter setting and increase all MDA 20 feet. Procedure NA at night.

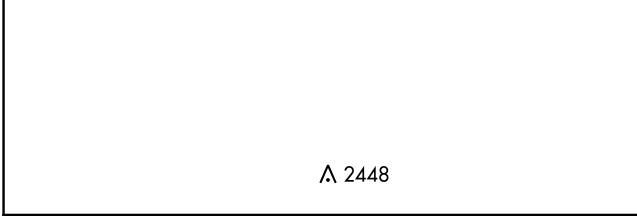
MISSED APPROACH: Climbing left turn to 3300 direct LEGGY and hold.

BUF AWOS 135.35	BUFFALO APP CON 126.15 263.125	UNICOM 123.0 (CTAF)
---------------------------	--	-------------------------------



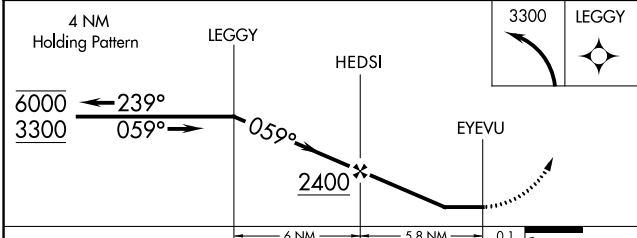
NE-2, 22 FEB 2024 to 21 MAR 2024

NE-2, 22 FEB 2024 to 21 MAR 2024



ELEV 669

Profile view diagram showing the 0.6% UP slope, 2659 X 36 distance, and 0.1 NM distance to the runway. The diagram also shows the 059° heading and the 28 runway width.



CATEGORY	A	B	C	D
C CIRCLING	1360-1	691 (700-1)	NA	NA