

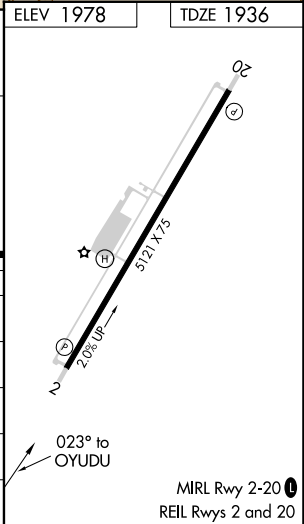
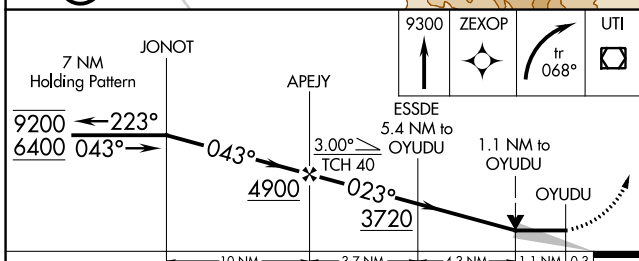
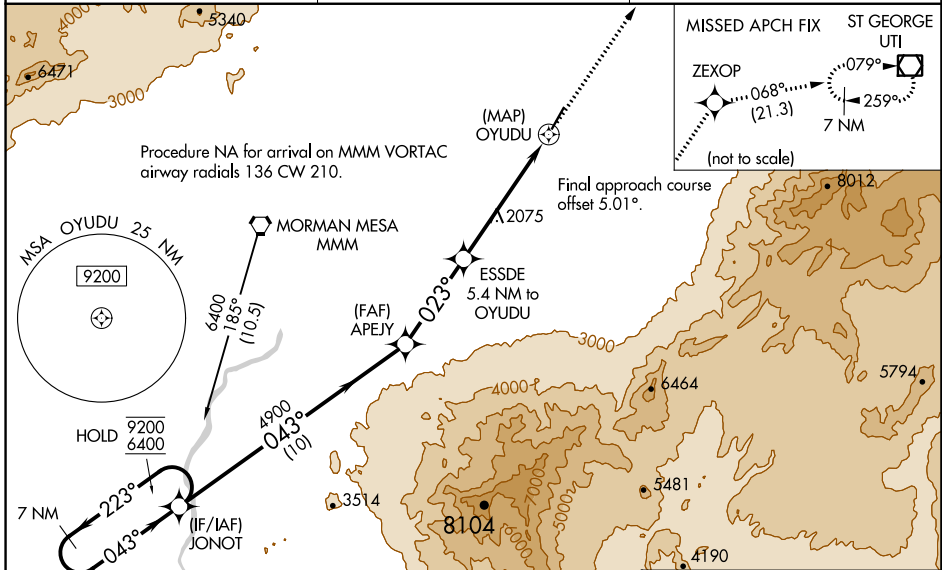
WAAS CH 69641 W02A	APP CRS 023°	Rwy Idg TDZE Apt Elev	5121 1936 1978
--	------------------------	-----------------------------	---

RNAV (GPS) RWY 2

MESQUITE (67L)

RNP APCH.	MISSED APPROACH: Climb to 9300 direct ZEXOP and climbing right turn on track 068° to UTI VOR/DME and hold, continue climb-in-hold to 9300. * Missed approach requires minimum climb of 258 feet per NM to 6200.
<p>▼ ▲ NA</p> <p>VDP NA when using St George altimeter setting. When local altimeter setting not received, use St. George altimeter setting and increase all MDAs 200 feet and LP* and LNAV* Cats C/D visibility % SM. Circling NA for Cat D west of Rwy 2-20. Circling Rwy 20 NA at night.</p>	

AWOS-2 118.525	LOS ANGELES CENTER 124.2 343.6	UNICOM 122.8 (CTAF) 0
--------------------------	--	---------------------------------



CATEGORY	A	B	C	D
LP MDA*	2340-1	404 (400-1)	2340-1 1/8	404 (400-1 1/8)
LP MDA	3080-1 1/4 1144 (1200-1 1/4)	3080-1 1/2 1144 (1200-1 1/2)	3080-3	1144 (1200-3)
LNAV MDA*	2340-1	404 (400-1)	2340-1 1/8	404 (400-1 1/8)
LNAV MDA	3140-1 1/4 1204 (1200-1 1/4)	3140-1 1/2 1204 (1200-1 1/2)	3140-3	1204 (1200-3)
CIRCLING	3140-1 1/4 1162 (1200-1 1/4)	3140-1 1/2 1162 (1200-1 1/2)	3140-3	1162 (1200-3)

SW-4, 22 FEB 2024 to 21 MAR 2024

SW-4, 22 FEB 2024 to 21 MAR 2024