

WAAS CH 72835 W12A	APP CRS 121°	Rwy Idg TDZE Apt Elev	3802 165 166
--	------------------------	-----------------------------	---

RNAV (GPS) RWY 12

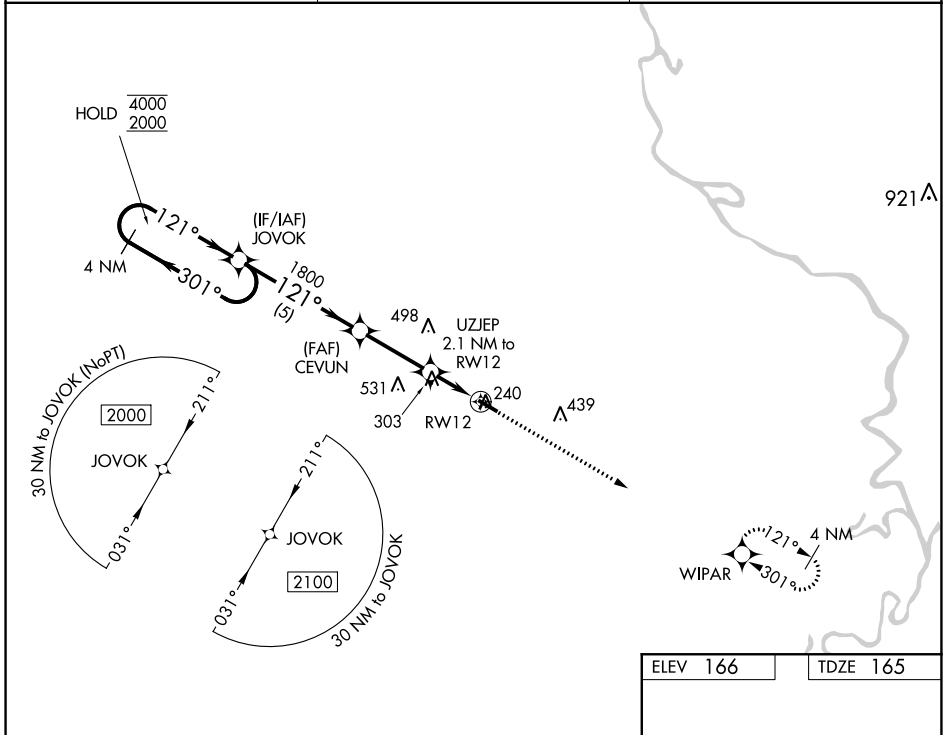
ROY WILCOX (5R.1)

RNP APCH.

NA Procedure NA at night. Use Mobile Rgnl altimeter setting; when not received, use Hattiesburg Bobby L Chain Muni altimeter setting and increase all MDAs 20 feet; increase LNAV Cat C visibility $\frac{1}{8}$ SM. Rwy 12 helicopter visibility reduction below 1 SM NA.

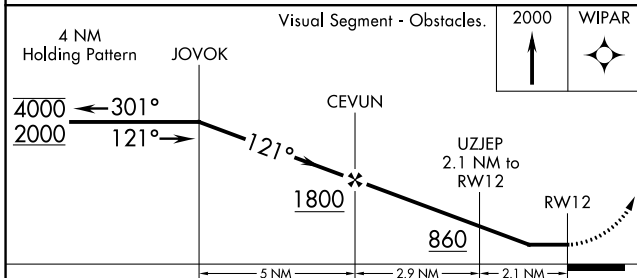
MISSED APPROACH:
Climb to 2000 direct
WIPAR and hold.

MOB ASOS 124.75 257.85	HOUSTON CENTER 127.65 285.475	UNICOM 122.8 (CTAF)
----------------------------------	---	-------------------------------

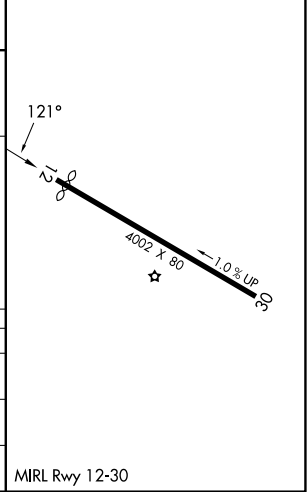


SE-4, 22 FEB 2024 to 21 MAR 2024

SE-4, 22 FEB 2024 to 21 MAR 2024



ELEV 166	TDZE 165
----------	----------



CATEGORY	A	B	C	D
LP MDA	660-1	495 (500-1)	660-1 $\frac{3}{8}$ 495 (500-1 $\frac{3}{8}$)	NA
LNAV MDA	680-1	515 (600-1)	680-1 $\frac{3}{8}$ 515 (600-1 $\frac{3}{8}$)	NA
C CIRCLING	740-1 574 (600-1)	760-1 594 (600-1)	940-2 $\frac{1}{4}$ 774 (800-2 $\frac{1}{4}$)	NA

WAAS CH 56535 W30A	APP CRS 301°	Rwy Idg 3802 TDZE 129 Apt Elev 166
--	------------------------	---

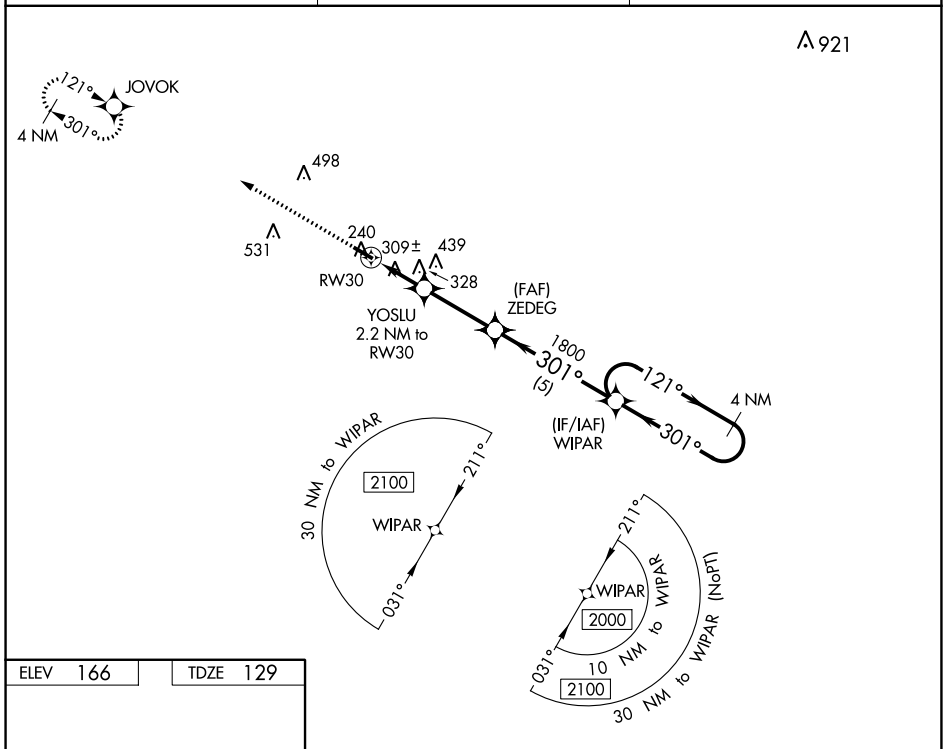
RNAV (GPS) RWY 30

ROY WILCOX (5R.1)

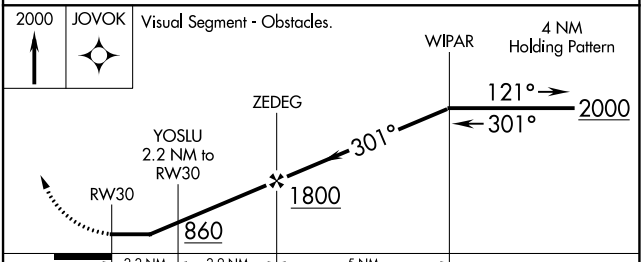
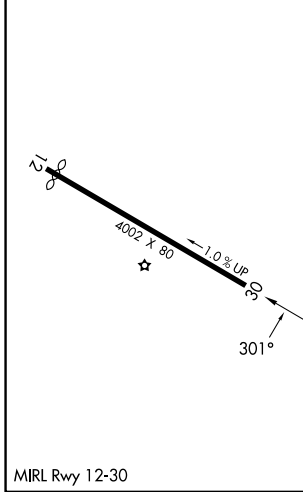
⚠ DME/DME RNP-0.3 NA. Procedure NA at night. Rwy 30 helicopter visibility reduction below 1 SM NA. Use Mobile Rgnl altimeter setting; when not received, use Hattiesburg Bobby L Chain Muni altimeter setting and increase all MDA 20 feet; increase LNAV Cat C visibility 1/8 SM.

⚠ NA MISSED APPROACH: Climb to 2000 direct JOVOK and hold.

MOB ASOS 124.75 257.85	HOUSTON CENTER 127.65 285.475	UNICOM 122.8 (CTAF)
----------------------------------	---	-------------------------------



ELEV 166	TDZE 129
----------	----------



CATEGORY	A	B	C	D
LP MDA	680-1	551 (600-1)	680-1 5/8 551 (600-1 5/8)	NA
LNAV MDA	700-1	571 (600-1)	700-1 5/8 571 (600-1 5/8)	NA
C CIRCLING	740-1 574 (600-1)	760-1 594 (600-1)	940-2 1/4 774 (800-2 1/4)	NA

SE-4, 22 FEB 2024 to 21 MAR 2024

SE-4, 22 FEB 2024 to 21 MAR 2024