

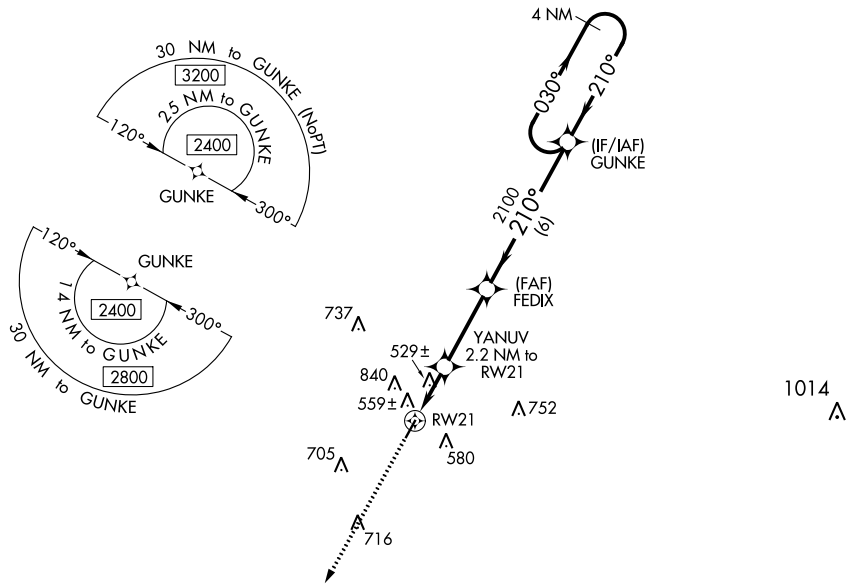
WAAS CH 53431 W21A	APP CRS 210°	Rwy Idg 4000 TDZE 364 Apt Elev 364
----------------------------------------	------------------------	---------------------------------------------------------------

RNAV (GPS) RWY 21
WINONA-MONTGOMERY COUNTY (5A6)

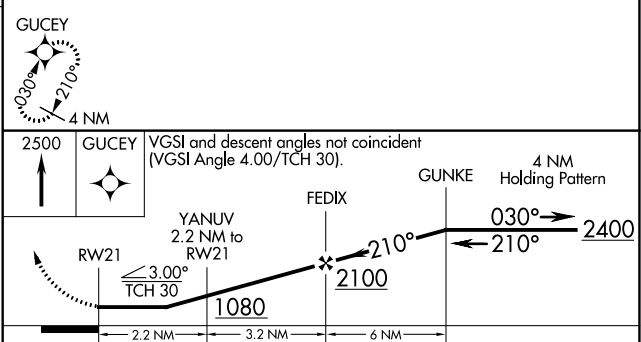
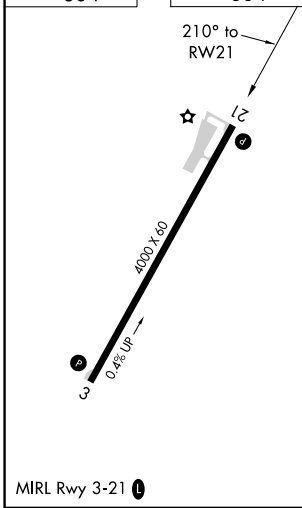
⚠ Use Grenada altimeter setting; when not received, use Greenwood altimeter setting. Circling NA NW of Rwy 3-21. DME/DME RNP-0.3 NA. Rwy 3, 21 helicopter visibility reduction below 1 SM NA. Procedure NA at night.

⚠ MISSED APPROACH: Climb to 2500 direct GUCEY and hold.

AWOS-3PT 120.175	GNF AWOS-3PT 118.025	MEMPHIS CENTER 128.5 279.55	CTAF 122.9 Ⓛ
----------------------------	--------------------------------	---------------------------------------	-------------------------------



ELEV 364 TDZE 364



CATEGORY	A	B	C	D
LP MDA	860-1	496 (500-1)	860-1 ³ / ₈ 496 (500-1 ³ / ₈)	NA
LNAV MDA	900-1	536 (600-1)	900-1 ¹ / ₂ 536 (600-1 ¹ / ₂)	NA
CIRCLING	960-1	596 (600-1)	1100-2 736 (800-2)	NA

SC-4, 22 FEB 2024 to 21 MAR 2024

SC-4, 22 FEB 2024 to 21 MAR 2024