

APP CRS	Rwy Idg	3200
341°	TDZE	1209
	Apt Elev	1211

RNAV (GPS) RWY 34

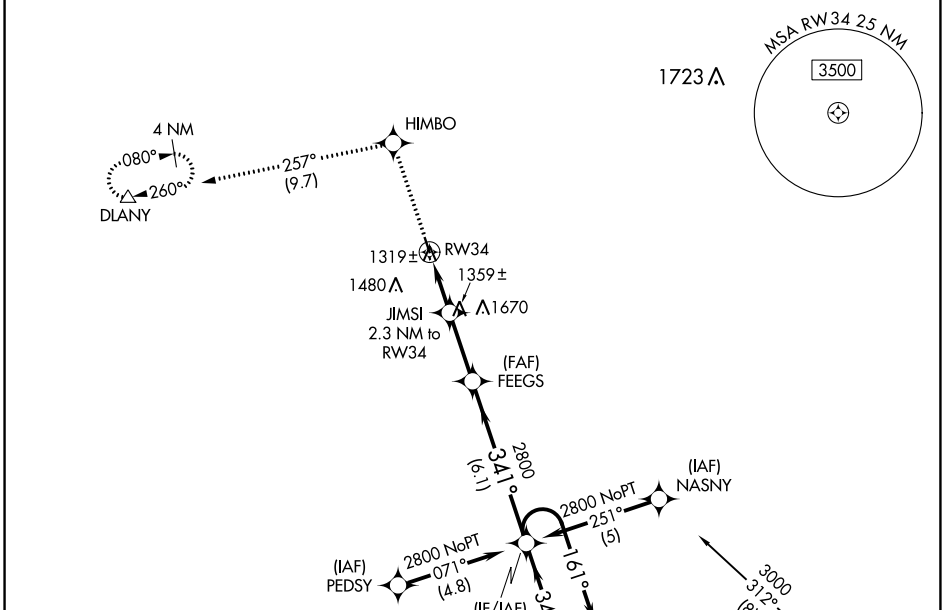
RUSHFORD MUNI/ROBERT W BUNKE FLD (55Y)

RNP APCH.

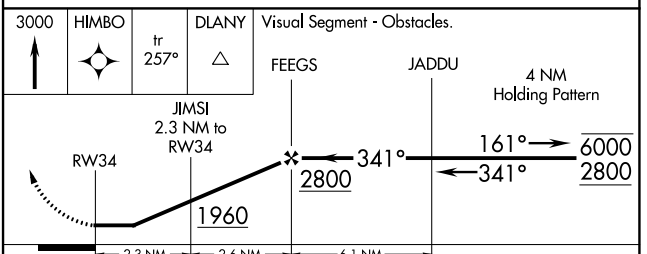
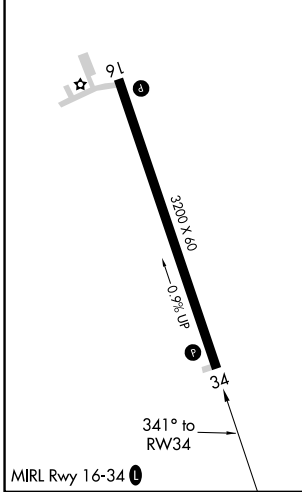
▼ Rwy 34 helicopter visibility reduction below 1 SM NA. Use Preston altimeter setting, when not received, use Winona altimeter setting and increase all MDAs 80 feet and Cat C visibility ¼ SM.

▲ NA MISSED APPROACH: Climb to 3000 direct HIMBO and track 257° to DLANY and hold.

ROCHESTER APP CON ★	CTAF
119.8 251.125	122.9 0



ELEV 1211	TDZE 1209
-----------	-----------



CATEGORY	A	B	C	D
LNAV MDA	1620-1	411 (500-1)	1620-1¼ 411 (500-1¼)	NA
CIRCLING	1720-1 509 (600-1)	1880-1 669 (700-1)	2080-2½ 869 (900-2½)	NA

NC-1, 22 FEB 2024 to 21 MAR 2024

NC-1, 22 FEB 2024 to 21 MAR 2024

VORTAC ODI 117.9 Chan 126	APP CRS 249°	Rwy Idg TDZE Apt Elev	N/A N/A 1211
---	------------------------	-----------------------------	---

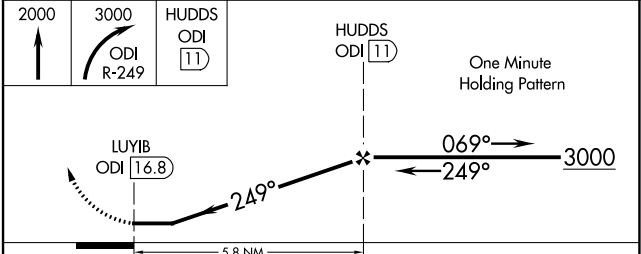
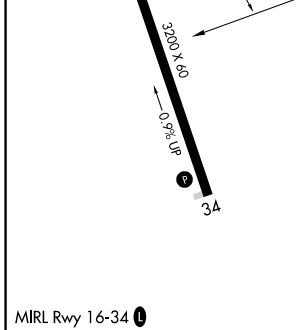
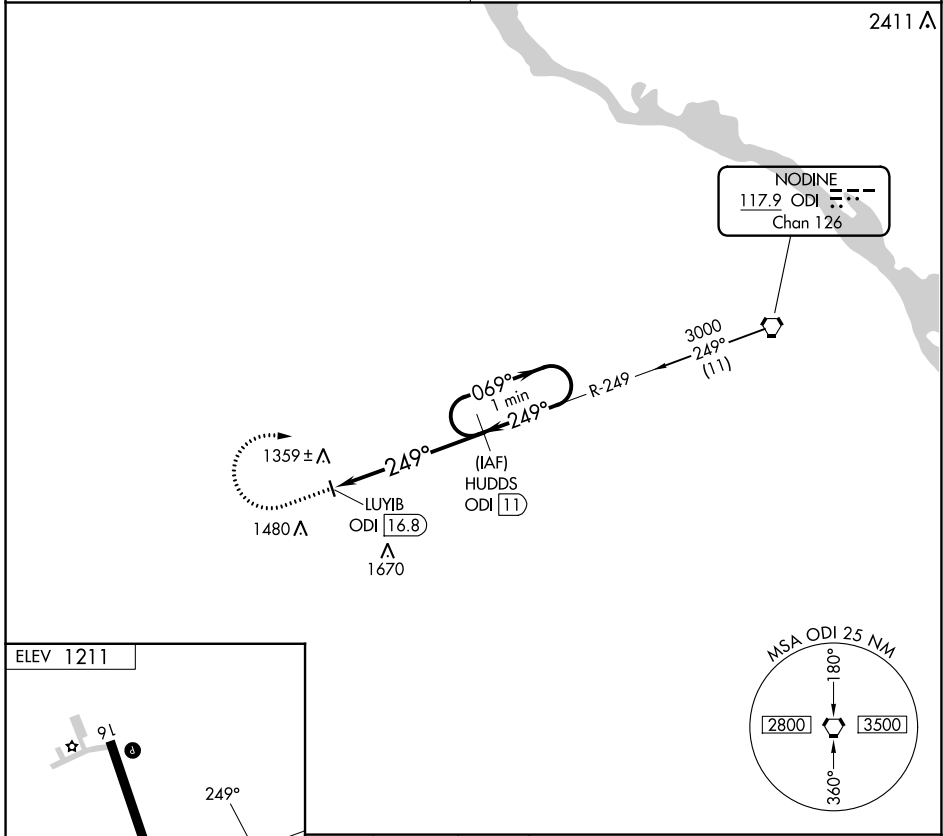
VOR-A

RUSHFORD MUNI/ROBERT W BUNKE FLD (55Y)

NA Use Preston altimeter setting, when not received, use Winona altimeter setting and increase all MDAs 80 feet and Cat C visibility ¼ SM. DME required.

MISSED APPROACH: Climb to 2000, then climbing right turn to 3000 on ODI VORTAC R-249 to HUDDS/ODI 11 DME and hold.

ROCHESTER APP CON * 119.8 251.125	CTAF 122.9 0
---	------------------------



CATEGORY	A	B	C	D
CIRCLING	1720-1 509 (600-1)	1880-1 669 (700-1)	2080-2½ 869 (900-2½)	NA

NC-1, 22 FEB 2024 to 21 MAR 2024

NC-1, 22 FEB 2024 to 21 MAR 2024