

APP CRS	Rwy Idg	<b>4041</b>
<b>013°</b>	TDZE	<b>273</b>
	Apt Elev	<b>273</b>

# RNAV (GPS) RWY 2

TICONDEROGA MUNI (4B6)

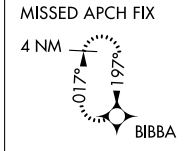
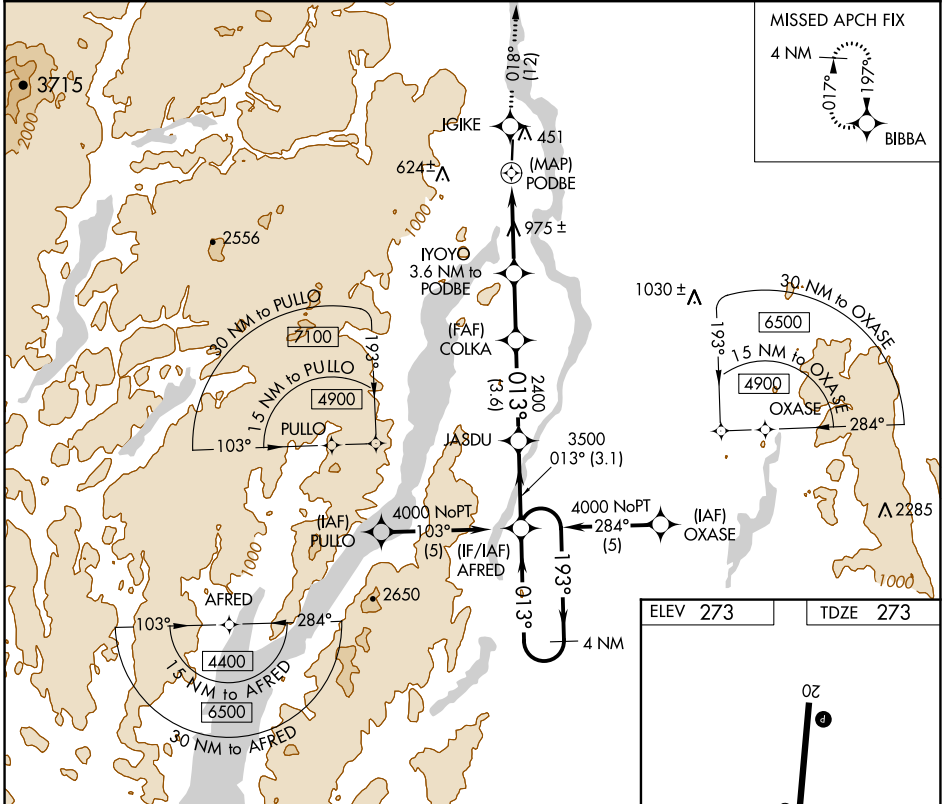
RNP APCH.

**NA** Use Burlington altimeter setting. Procedure NA at night.  
Rwy 2 helicopter visibility reduction below 1 SM NA.

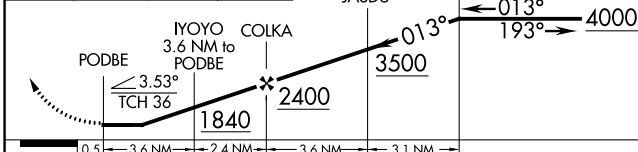
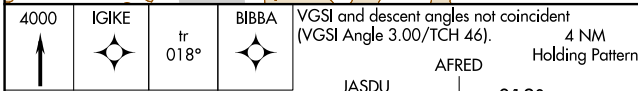
MISSED APPROACH: Climb to 4000 direct IGIKE and on track 018° to BIBBA and hold.

BOSTON CENTER  
**135.7 282.2**

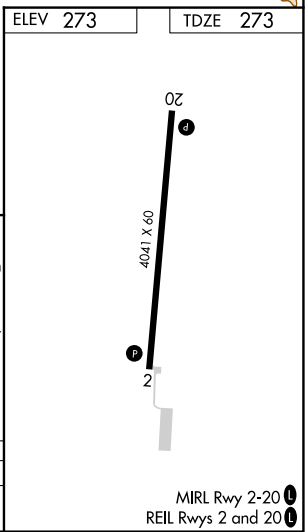
UNICOM  
**122.8 (CTAF)**



ELEV 273	TDZE 273
----------	----------



CATEGORY	A	B	C	D
LNAV MDA	1520-1¼ 1247 (1300-1¼)	1520-1½ 1247 (1300-1½)	NA	



MIRL Rwy 2-20  
REIL Rwy 2 and 20

NE-2, 22 FEB 2024 to 21 MAR 2024

NE-2, 22 FEB 2024 to 21 MAR 2024