

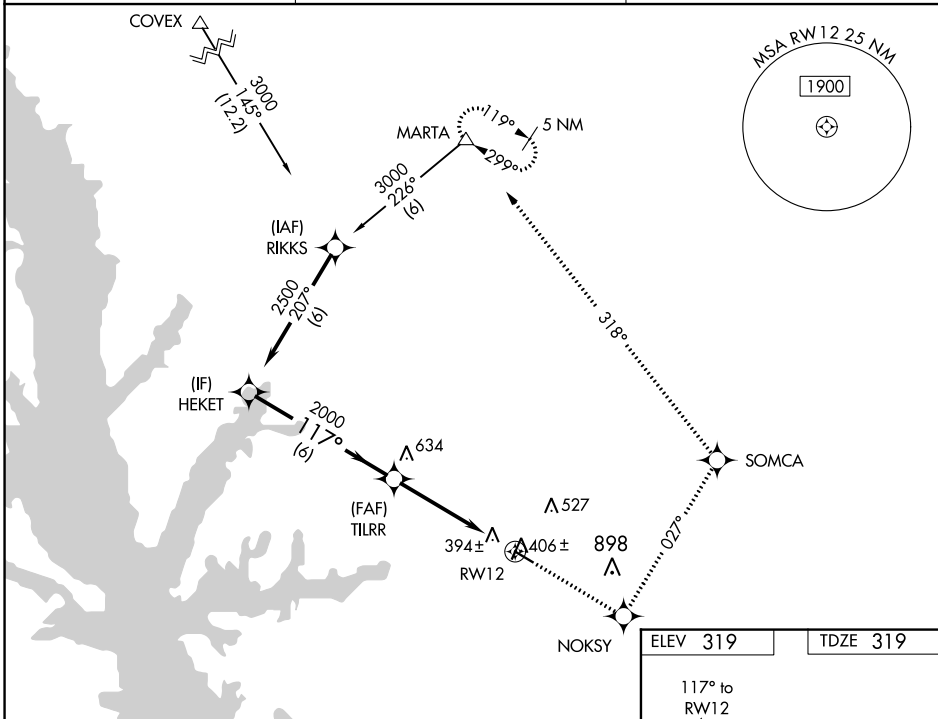
WAAS CH 78015 W12A	APP CRS 117°	Rwy Idg 4402 TDZE 319 Apt Elev 319
--	------------------------	---

RNAV (GPS) RWY 12

HART (3R4)

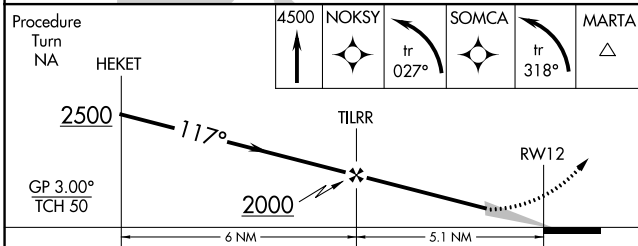
RNP APCH.	Baro-VNAV NA. Use Fort Polk altimeter setting; when not received, use Natchitoches altimeter setting; increase LPV DA to 715 feet, LNAV/VNAV DA to 767 feet, and all MDA 20 feet, and increase LPV visibility all Cats ¼ SM.	MISSED APPROACH: Climb to 4500 direct NOKSY and left turn via track 027° to SOMCA and left turn via track 318° to MARTA and hold.
-----------	--	---

POLK APP CON 123.7 261.3	GCO 135.075	UNICOM 122.8 (CTAF) 1
------------------------------------	-----------------------	---------------------------------



SC-4, 22 FEB 2024 to 21 MAR 2024

SC-4, 22 FEB 2024 to 21 MAR 2024



ELEV 319	TDZE 319
----------	----------

REIL Rwy 12 and 30 1
MIRL Rwy 12-30 1

CATEGORY	A	B	C	D
LPV DA	713-1¼ 394 (400-1¼)			NA
LNAV/VNAV DA	765-1½ 446 (500-1½)			NA
LNAV MDA	820-1 501 (600-1)		820-1½ 501 (600-1½)	NA
CIRCLING	940-1 621 (700-1)		1280-3 961 (1000-3)	NA