

APP CRS	Rwy Idg	<b>3501</b>
<b>188°</b>	TDZE	<b>1204</b>
	Apt Elev	<b>1207</b>

# RNAV (GPS) RWY 19

ASHLAND COUNTY (3G4)

RNP APCH.

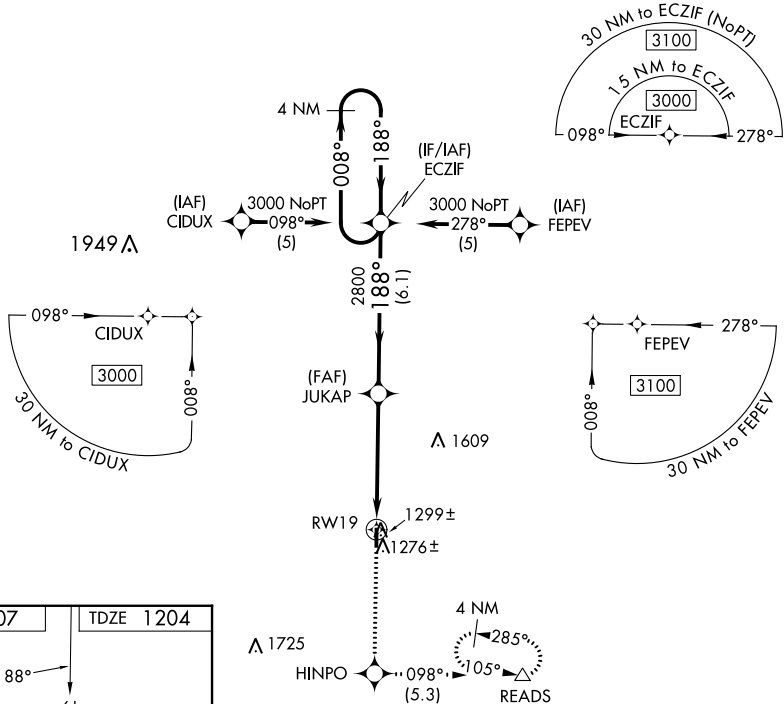
- ▼ Rwy 19 helicopter visibility reduction below 1 SM NA.
- ▲ NA Procedure NA at night. Use Mansfield altimeter setting, when not received use Wooster altimeter setting.

MISSED APPROACH: Climb to 3000 direct HINPO and left turn on track 098° to READS and hold.

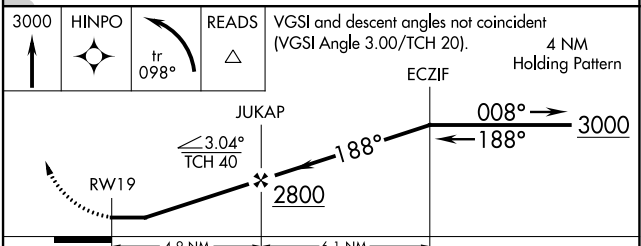
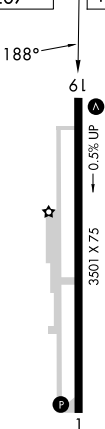
MFD ASOS  
**125.3**

CLEVELAND APP CON ★  
**124.2 360.65**

UNICOM  
**122.7 (CTAF)**



ELEV 1207	TDZE 1204
-----------	-----------



CATEGORY	A	B	C	D
LNAV MDA	1600-1	396 (400-1)	1600-1 $\frac{1}{8}$ 396 (400-1 $\frac{1}{8}$ )	NA
CIRCLING	1660-1	453 (500-1)	1740-1 $\frac{1}{2}$ 533 (600-1 $\frac{1}{2}$ )	NA

EC-2, 22 FEB 2024 to 21 MAR 2024

EC-2, 22 FEB 2024 to 21 MAR 2024