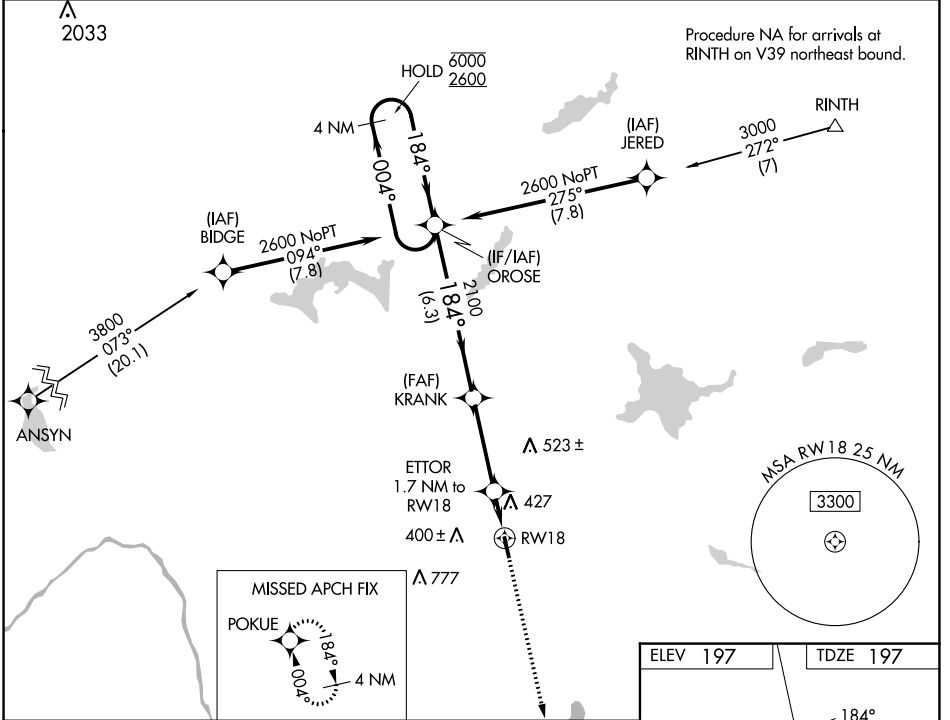


WAAS CH <b>53342</b> <b>W18A</b>	APP CRS <b>184°</b>	Rwy Idg TDZE <b>197</b> Apt Elev <b>197</b>	<b>4003</b>
--	------------------------	---	-------------

# RNAV (GPS) RWY 18

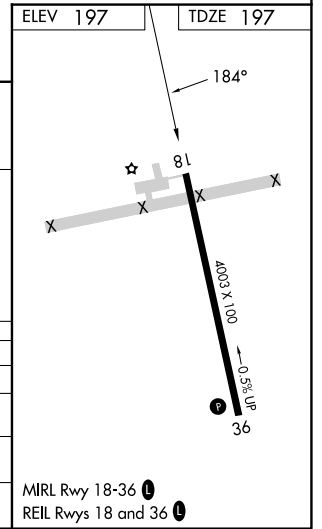
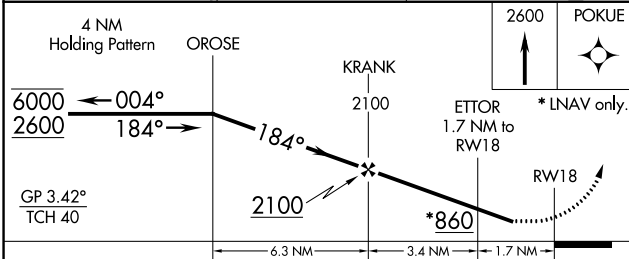
PITTSFIELD MUNI (2B7)

RNP APCH.		MISSED APPROACH: Climb to 2600 direct POKUE and hold.
<p><b>V</b> Rwy 18 helicopter visibility reduction below 3/4 SM NA. Baro-VNAV NA.  <b>Δ</b> NA Use Bangor altimeter setting; when not received procedure NA.</p>	<p>BGR ASOS <b>127.75</b></p>	
<p>BANGOR APP CON <b>118.925 239.3</b></p>		<p>UNICOM <b>122.8</b> (CTAF) <b>1</b></p>



NE-1, 22 FEB 2024 to 21 MAR 2024

NE-1, 22 FEB 2024 to 21 MAR 2024



CATEGORY	A	B	C	D
LPV DA	610-1 1/8	413 (500-1 1/8)		NA
LNAV/VNAV DA	785-1 3/4	588 (600-1 3/4)		NA
LNAV MDA	740-1	543 (600-1)	740-1 5/8 543 (600-1 5/8)	NA
<b>C</b> CIRCLING	800-1	603 (700-1)	880-2 683 (700-2)	NA