

APP CRS <b>272°</b>	Rwy Idg TDZE Apt Elev	<b>2499</b> <b>645</b> <b>645</b>
------------------------	-----------------------------	-----------------------------------------

# RNAV (GPS) RWY 27

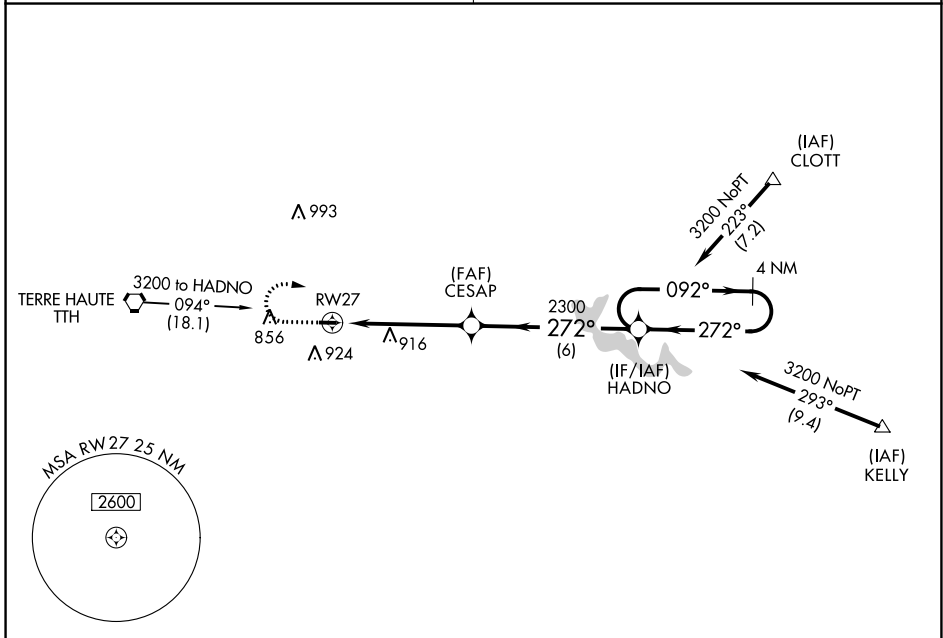
BRAZIL CLAY COUNTY (ØI2)

**▼** DME/DME RNP-0.3 NA. Use Terre Haute altimeter setting.  
**▲** NA Procedure NA at night. Helicopter visibility reduction below 1 SM NA.

MISSED APPROACH: Climb to 2300 then climbing right turn to 3200 direct HADNO WP and hold.

HULMAN APP CON **125.45 339.8**

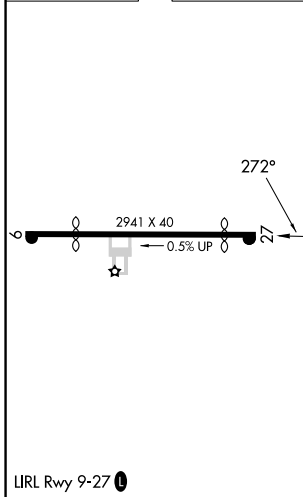
UNICOM **122.8 (CTAF) Ø**



EC-2, 22 FEB 2024 to 21 MAR 2024

EC-2, 22 FEB 2024 to 21 MAR 2024

ELEV 645	TDZE 645
----------	----------



CATEGORY      A                      B                      C                      D			
LNAV MDA		NA	
CIRCLING		NA	