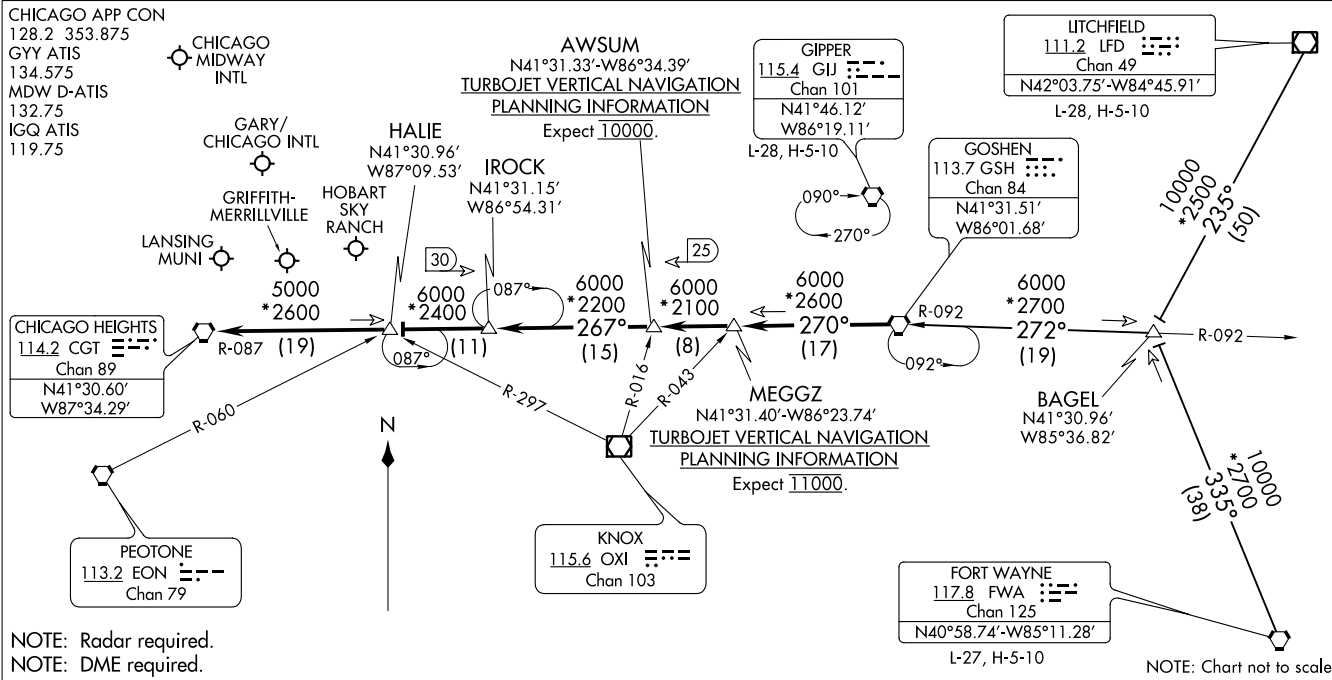


GOSHEN SEVEN ARRIVAL
(GSH.GSH7) 27 APR 17



NOTE: Radar required.
NOTE: DME required.

NOTE: Chart not to scale.

ARRIVAL ROUTE DESCRIPTION

FORT WAYNE TRANSITION (FWA.GSH7): From over FWA VORTAC on FWA R-335 to BAGEL then on GSH R-092 to GSH VORTAC. Thence....
LITCHFIELD TRANSITION (LFD.GSH7): From over LFD VOR/DME on LFD R-235 to BAGEL then on GSH R-092 to GSH VORTAC. Thence....
From over GSH VORTAC on GSH R-270 to MEGGZ, then on GSH R-270 to AWSUM, then on GSH R-270 and CGT R-087 to IROCK, then on CGT R-087 to HALIE INT, then on CGT R-087 to CGT VORTAC.
 Expect radar vectors to final approach course.

(GSH.GSH7) 20310
GOSHEN SEVEN ARRIVAL

AL-81 (FAA)

CHICAGO, ILLINOIS

CHICAGO, ILLINOIS

LUCIT ONE ARRIVAL (RNAV)
(LUCIT.LUCIT1) 21JUL16

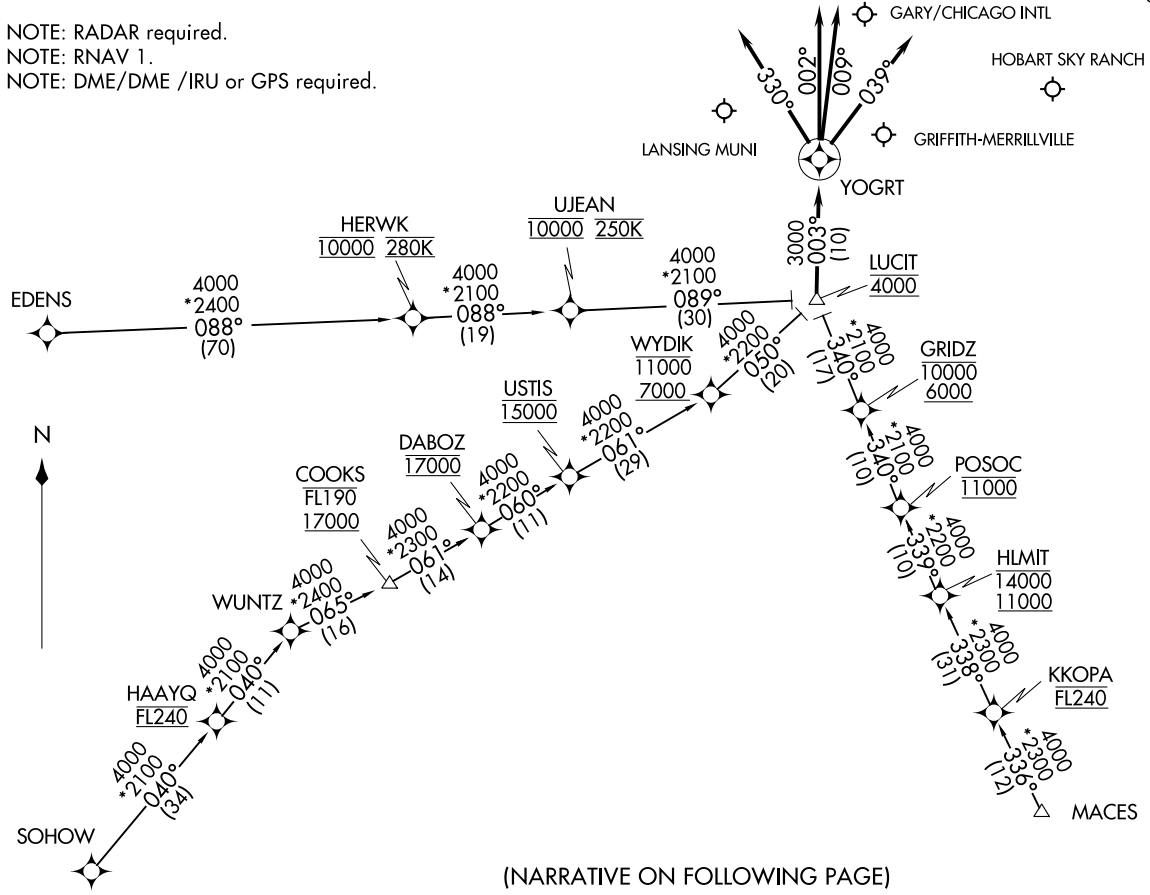
(LUCIT.LUCIT1) 20198
LUCIT ONE ARRIVAL (RNAV)

AL-748 (FAA)

GARY, INDIANA

CHICAGO APP CON
133.1 285.6
GY ATIS
134.575

NOTE: RADAR required.
NOTE: RNAV 1.
NOTE: DME/DME /IRU or GPS required.



(NARRATIVE ON FOLLOWING PAGE)

NOTE: Chart not to scale.

ARRIVAL ROUTE DESCRIPTION

EDENS TRANSITION (EDENS.LUCIT1):

MACES TRANSITION (MACES.LUCIT1):

SOHOW TRANSITION (SOHOW.LUCIT1):

LANDING GRIFFITH MERRILLVILLE:

From LUCIT on track 003° to YOGRT, then on track 009°.

Expect RADAR vectors to final approach course.

LANDING HOBART SKY RANCH:

From LUCIT on track 003° to YOGRT, then on track 039°.

Expect RADAR vectors to final approach course.

LANDING GARY/CHICAGO INTL:

From LUCIT on track 003° to YOGRT, then on track 002°.

Expect RADAR vectors to final approach course.

LANDING LANSING MUNI:

From LUCIT on track 003° to YOGRT, then on track 330°.

Expect RADAR vectors to final approach course.

EC-2, 28 JAN 2021 to 25 FEB 2021

EC-2, 28 JAN 2021 to 25 FEB 2021