

APP CRS	Rwy Idg	<b>3779</b>
<b>263°</b>	TDZE	<b>632</b>
	Apt Elev	<b>634</b>

# RNAV (GPS) RWY 26

GRIFFITH-MERRILLVILLE (Ø5C)

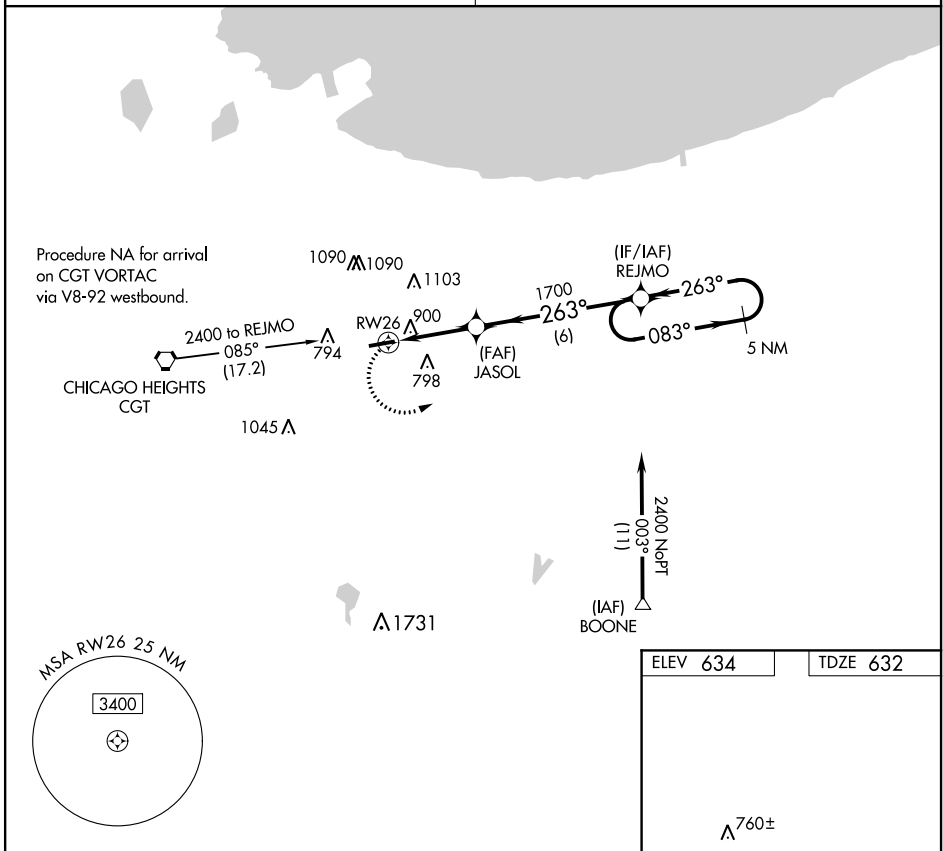
RNP APCH

▼ Obtain local altimeter setting on CTAF; when not received use Chicago Midway  
 ▲ NA Init altimeter setting and increase all MDAs 60 feet. Visibility reduction by  
 helicopters NA. Procedure NA at night.

MISSED APPROACH: Climbing left  
 turn to 2400 direct REJMO and hold.

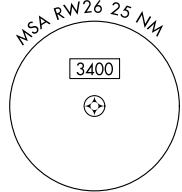
CHICAGO APP CON  
**133.1 285.6**

UNICOM  
**123.0 (CTAF) 0**

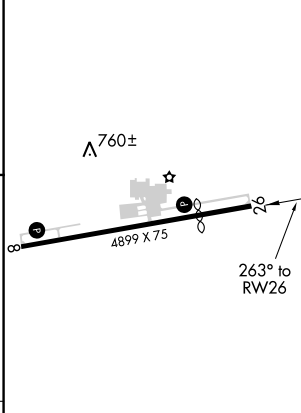
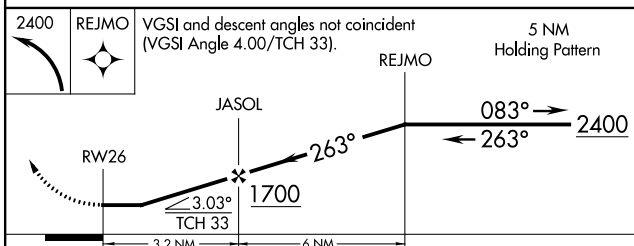


EC-2, 28 JAN 2021 to 25 FEB 2021

EC-2, 28 JAN 2021 to 25 FEB 2021



ELEV 634	TDZE 632
----------	----------



CATEGORY	A	B	C	D
LNNAV MDA	1160-1	528 (600-1)		NA
<input checked="" type="checkbox"/> CIRCLING	1200-1	566 (600-1)		NA

REL Rwy 8 and 26 0  
 MRL Rwy 8-26 0

APP CRS	Rwy Idg	<b>4899</b>
<b>083°</b>	TDZE	<b>634</b>
	Apt Elev	<b>634</b>

# RNAV (GPS) RWY 8

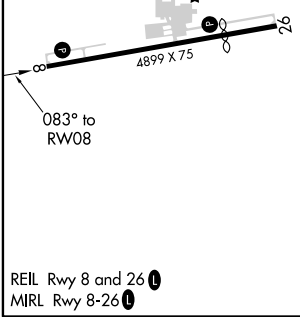
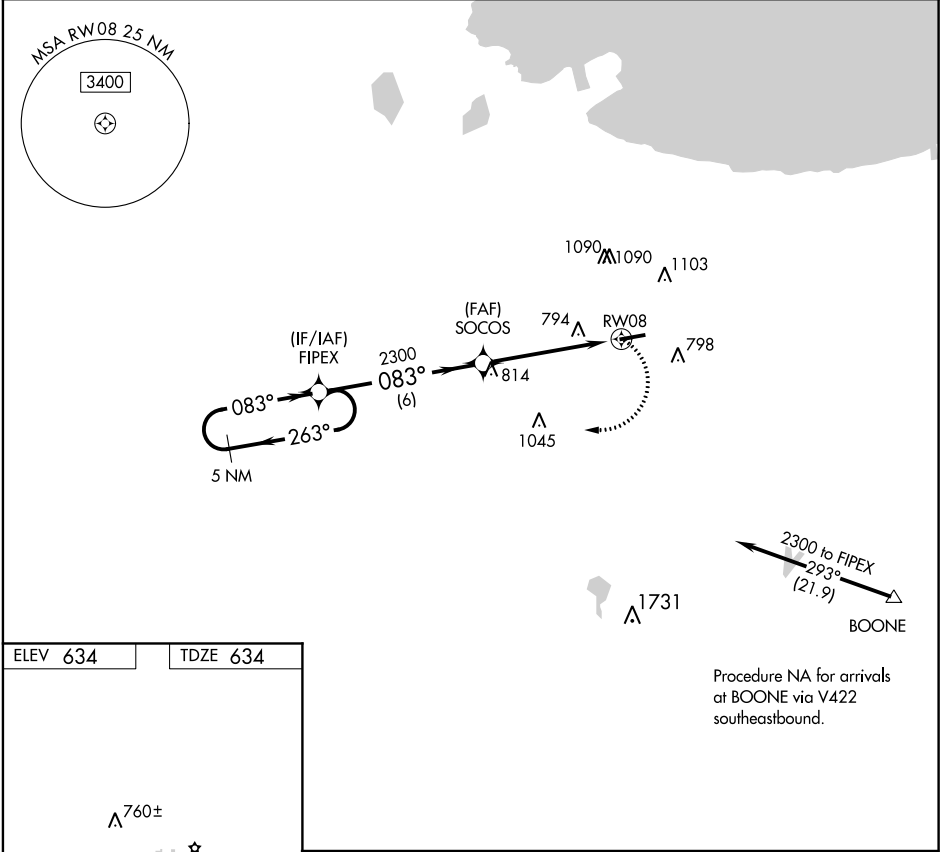
GRIFFITH-MERRILLVILLE (Ø5C)

RNP APCH

▼ Obtain local altimeter setting on CTAF; when not received use Chicago Midway  
 ▲ NA Init altimeter setting and increase all MDAs 60 feet. Visibility reduction by helicopters NA. Procedure NA at night.

MISSED APPROACH: Climbing right turn to 2300 direct FIPEX and hold.

CHICAGO APP CON <b>133.1 285.6</b>	UNICOM <b>123.0 (CTAF) 0</b>
---------------------------------------	---------------------------------



5 NM Holding Pattern	VGSi and descent angles not coincident (VGSi Angle 3.50/TCH 44).		2300	FIPEX
	2300	263°	083°	
	FIPEX	SOCOS		
			2300	
			083°	
			3.04°	TCH 41
				RWY 8
			6 NM	5 NM
CATEGORY	A	B	C	D
LNAV MDA	1080-1	446 (500-1)		NA
<input checked="" type="checkbox"/> CIRCLING	1200-1	566 (600-1)		NA

EC-2, 28 JAN 2021 to 25 FEB 2021

EC-2, 28 JAN 2021 to 25 FEB 2021

VORTAC CGT <b>114.2</b> Chan <b>89</b>	APP CRS <b>084°</b>	Rwy Idg TDZE <b>634</b> Apt Elev <b>634</b>	<b>4899</b>
--	------------------------	---	-------------

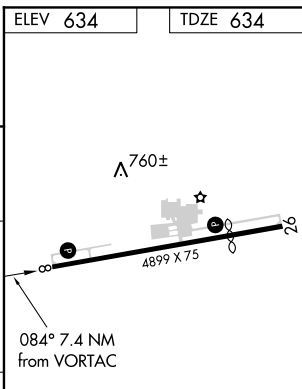
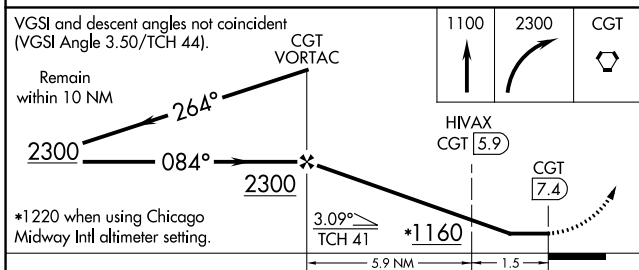
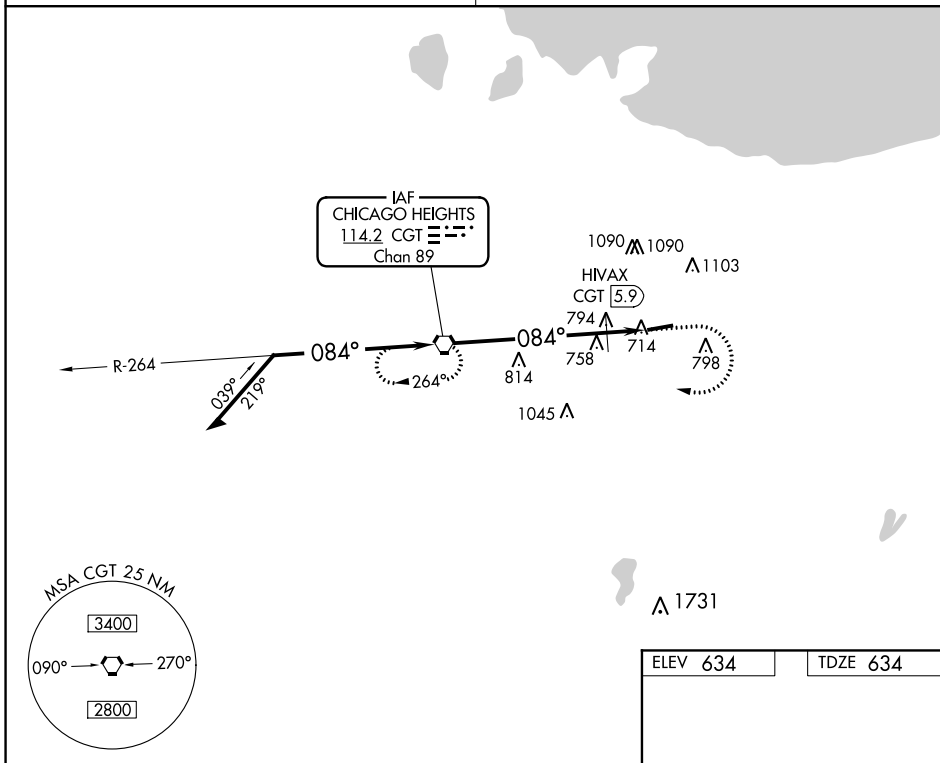
**VOR RWY 8**  
GRIFFITH-MERRILLVILLE (05C)

**NA** Obtain local altimeter setting on CTAF; when not received, use Chicago Midway Intl altimeter setting and increase all MDAs 60 feet. Visibility reduction by helicopters NA. Procedure NA at night.

**MISSED APPROACH:** Climb to 1100 then climbing right turn to 2300 direct CGT VORTAC and hold.

CHICAGO APP CON  
**133.1 285.6**

UNICOM  
**123.0 (CTAF) 0**



CATEGORY	A	B	C	D
S-8	1160-1	526 (600-1)		NA
CIRCLING	1200-1	566 (600-1)		NA
HIVAX FIX MINIMUMS				
S-8	1060-1	426 (500-1)		NA
CIRCLING	1200-1	566 (600-1)		NA

REIL Rwy 8 and 26	<b>0</b>
MIRL Rwy 8-26	<b>0</b>
FAF to MAP 7.4 NM	
Knots	60 90 120 150 180
Min:Sec	7:24 4:56 3:42 2:58 2:28

EC-2, 28 JAN 2021 to 25 FEB 2021

EC-2, 28 JAN 2021 to 25 FEB 2021