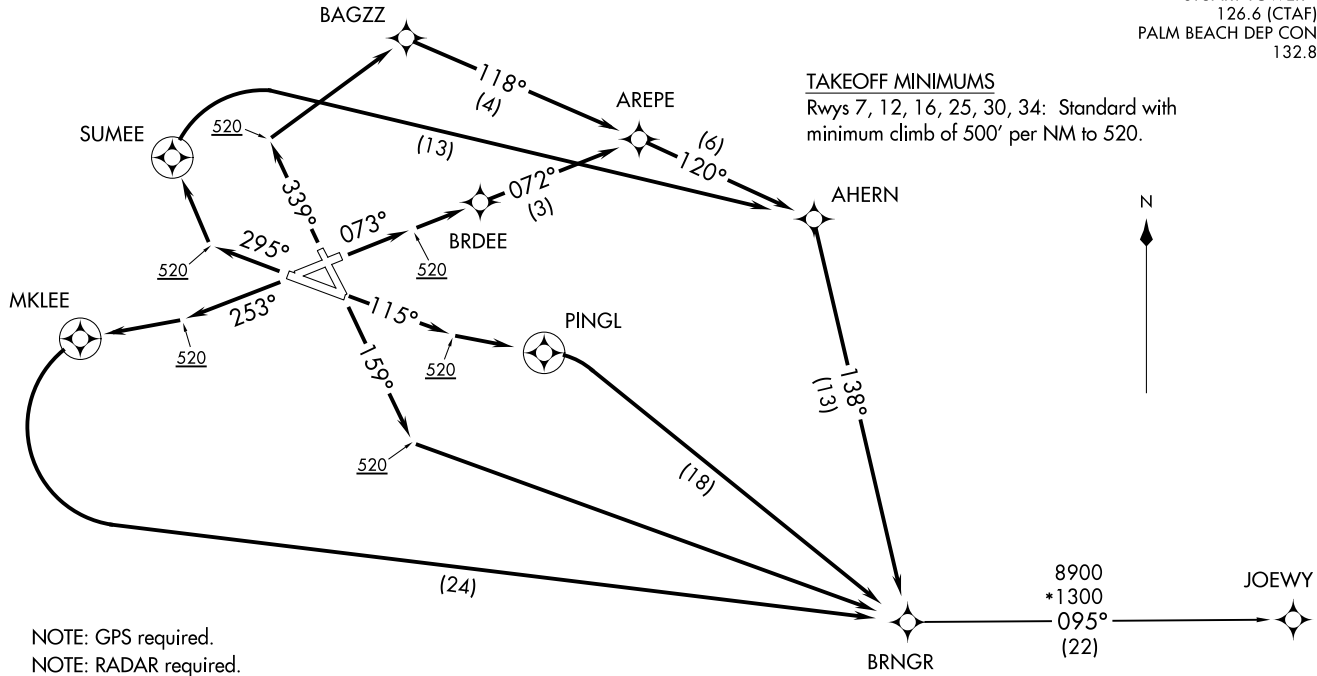


**TOP ALTITUDE:
3000**

ATIS 134.475
GND CON 121.7
STUART TOWER* 126.6 (CTAF)
PALM BEACH DEP CON 132.8

TAKEOFF MINIMUMS
Rwys 7, 12, 16, 25, 30, 34: Standard with minimum climb of 500' per NM to 520.



- NOTE: GPS required.
- NOTE: RADAR required.
- NOTE: RNAV 1.
- NOTE: For turbojet/turboprop aircraft only.
- NOTE: Transponder code will be issued via SUA ground control or PBI APP CON when tower closed.

(CONTINUED ON NEXT PAGE)

NOTE: Chart not to scale.

BRNGR TWO DEPARTURE (RNAV)
(BRNGR2.BRNGR) 21JUL16

(BRNGR2.BRNGR) 17173
BRNGR TWO DEPARTURE (RNAV)

AL-9217 (FAA)

STUART, FLORIDA
WITHAM FIELD (SUA)

WITHAM FIELD (SUA)
STUART, FLORIDA

BRNGR TWO DEPARTURE (RNAV)



DEPARTURE ROUTE DESCRIPTION

TAKEOFF RWY 7: Climb heading 073° to 520, then direct BRDEE, then via depicted route to BRNGR. Thence....

TAKEOFF RWY 12: Climb heading 115° to 520, then left turn direct PINGL, then right turn direct BRNGR. Thence....

TAKEOFF RWY 16: Climb heading 159° to 520, then left turn direct BRNGR. Thence....

TAKEOFF RWY 25: Climb heading 253° to 520, then right turn direct MKLEE, then left turn direct BRNGR. Thence....

TAKEOFF RWY 30: Climb heading 295° to 520, then right turn direct SUMEE, then right turn direct AHERN, then via depicted route to BRNGR. Thence....

TAKEOFF RWY 34: Climb heading 339° to 520, then right turn direct BAGZZ, then via depicted route to BRNGR. Thence....

....via JOEWY transition, maintain 3000 or as assigned by ATC. Expect clearance to filed altitude/flight level ten minutes after departure.

JOEWY TRANSITION (BRNGR2.JOEWY):

TAKEOFF OBSTACLE NOTES

- Rwy 7: Trees beginning 75' from DER, 289' left of centerline, up to 100' AGL/114' MSL.
Trees beginning 268' from DER, 287' right of centerline, up to 100' AGL/109' MSL.
- Rwy 12: Pole and trees beginning 35' from DER, 55' left of centerline, up to 59' AGL/73' MSL.
Trees beginning 763' from DER, 45' right of centerline, up to 67' AGL/81' MSL.
- Rwy 16: Trees beginning 627' from DER, 42' left of centerline, up to 46' AGL/60' MSL.
Trees beginning 70' from DER, 202' right of centerline, up to 92' AGL/106' MSL.
- Rwy 25: Storage racks and trees beginning 176' from DER, 17' left of centerline, up to 36' AGL/55' MSL. Trees beginning 123' from DER, 316' right of centerline, up to 55' AGL/79' MSL. Antenna tower 4948' from DER, 1539' left of centerline, 151' AGL/167' MSL.
- Rwy 30: Trees beginning 155' from DER, 47' left of centerline, up to 72' AGL/86' MSL.
Poles and trees beginning 5' from DER, 28' right of centerline, up to 64' AGL/78' MSL.
- Rwy 34: Trees beginning 362' from DER, 473' left of centerline, up to 100' AGL/109' MSL.
Trees beginning 281' from DER, 385' right of centerline, up to 100' AGL/109' MSL.

SE-3: 07 DEC 2017 to 04 JAN 2018

SE-3: 07 DEC 2017 to 04 JAN 2018

BRNGR TWO DEPARTURE (RNAV)

(BRNGR2.BRNGR) 21JUL16

**TOP ALTITUDE:
3000**

ATIS 134.475
GND CON 121.7
STUART TOWER* 126.6 (CTAF)
PALM BEACH DEP CON 132.8

SHEDS

4300
*1300
298°
(5)

SNDLR

OLADY

272°
(7)

281°
(13)

(11)

339°
(4)

073°

BRDEE

TAKEOFF MINIMUMS

Rwy 34: Standard.
Rwys 7, 12, 16, 25, 30: Standard with
minimum climb of 500 feet per NM to 520.

323°
(9)

305°
(13)

520

295°

253°

520

115°

PINGL

SPYKS

MKLEE

520

159°

520

520

(12)

- NOTE: GPS required.
- NOTE: RADAR required.
- NOTE: RNAV 1.
- NOTE: For turbojet/turboprop aircraft only.
- NOTE: Transponder code will be issued via SUA ground control or PBI APP CON when tower closed.

(CONTINUED ON NEXT PAGE)

NOTE: Chart not to scale.

SNDLR TWO DEPARTURE (RNAV)
(SNDLR2.SNDLR) 21JUL16

STUART, FLORIDA
WITHAM FIELD (SUA)

(SNDLR2.SNDLR) 17173
SNDLR TWO DEPARTURE (RNAV)

AL9217 (FAA)
WITHAM FIELD (SUA)
STUART, FLORIDA

SNDLR TWO DEPARTURE (RNAV)



DEPARTURE ROUTE DESCRIPTION

TAKEOFF RWY 7: Climb heading 073° to 520, then direct BRDEE, then left turn direct OLADY, then via depicted route to SNDLR. Thence....

TAKEOFF RWY 12: Climb heading 115° to 520, then left turn direct PINGL, then right turn direct SPYKS, then via depicted route to SNDLR. Thence....

TAKEOFF RWY 16: Climb heading 159° to 520, then right turn direct SPYKS, then via depicted route to SNDLR. Thence....

TAKEOFF RWY 25: Climb heading 253° to 520, then right turn direct MKLEE, then via depicted route to SNDLR. Thence....

TAKEOFF RUNWAY 30: Climb heading 295° to 520, then direct SNDLR. Thence....

TAKEOFF RUNWAY 34: Climb heading 339° to intercept the 281° course to SNDLR. Thence....

...via SHEDS transition, maintain 3000 or as assigned by ATC. Expect clearance to filed altitude/flight level ten minutes after departure.

SHEDS TRANSITION (SNDLR2.SHEDS):

TAKEOFF OBSTACLE NOTES

- Rwy 7: Trees beginning 75' from DER, 289' left of centerline, up to 100' AGL/114' MSL.
Trees beginning 268' from DER, 287' right of centerline, up to 100' AGL/109' MSL.
- Rwy 12: Pole and trees beginning 35' from DER, 55' left of centerline, up to 59' AGL/73' MSL.
Trees beginning 763' from DER, 45' right of centerline, up to 67' AGL/81' MSL.
- Rwy 16: Trees beginning 627' from DER, 42' left of centerline, up to 46' AGL/60' MSL.
Trees beginning 70' from DER, 202' right of centerline, up to 92' AGL/106' MSL.
- Rwy 25: Storage racks and trees beginning 176' from DER, 17' left of centerline, up to 36' AGL/55' MSL.
Trees beginning 123' from DER, 316' right of centerline, up to 55' AGL/79' MSL.
- Rwy 30: Trees beginning 155' from DER, 47' left of centerline, up to 72' AGL/86' MSL.
Poles and trees beginning 5' from DER, 28' right of centerline, up to 64' AGL/78' MSL.
- Rwy 34: Trees beginning 362' from DER, 473' left of centerline, up to 100' AGL/109' MSL.
Trees beginning 281' from DER, 385' right of centerline, up to 100' AGL/109' MSL.

SE-3: 07 DEC 2017 to 04 JAN 2018

SE-3: 07 DEC 2017 to 04 JAN 2018